

CYP2B6 Rabbit Polyclonal Antibody



CAB1463

Product Information

Size:

20uL, 50uL, 100uL, 200uL

Observed MW:

66kDa

Calculated MW:

33kDa/56kDa

Applications:

WB IHC

Reactivity:

Human, Mouse, Rat

Antibody Information

Recommended dilutions:

WB 1:500 - 1:1000 IHC 1:50
- 1:100

Source:

Rabbit

Isotype:

IgG

Purification:

Affinity purification

Protein Background

This gene, CYP2B6, encodes a member of the cytochrome P450 superfamily of enzymes. The cytochrome P450 proteins are monooxygenases which catalyze many reactions involved in drug metabolism and synthesis of cholesterol, steroids and other lipids. This protein localizes to the endoplasmic reticulum and its expression is induced by phenobarbital. The enzyme is known to metabolize some xenobiotics, such as the anti-cancer drugs cyclophosphamide and ifosphamide. Transcript variants for this gene have been described; however, it has not been resolved whether these transcripts are in fact produced by this gene or by a closely related pseudogene, CYP2B7. Both the gene and the pseudogene are located in the middle of a CYP2A pseudogene found in a large cluster of cytochrome P450 genes from the CYP2A, CYP2B and CYP2F subfamilies on chromosome 19q.

Immunogen information

Gene ID:

1555

Uniprot

P20813

Synonyms:

CYP2B6; CPB6; CYP2B; CYP2B7; CYP2B7P; CYP11B6; EFVM; IIB1; P450

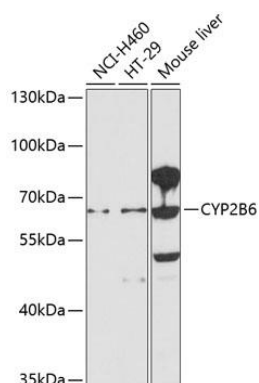
Immunogen:

Recombinant fusion protein containing a sequence corresponding to amino acids 160-340 of human CYP2B6 (NP_000758.1).

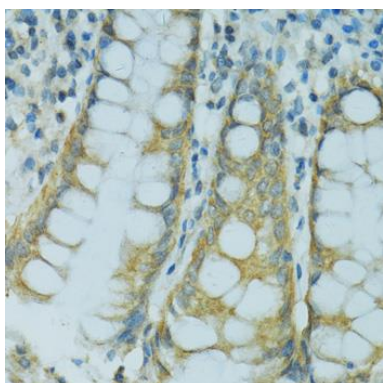
Storage:

Store at -20°C. Avoid freeze / thaw cycles. Buffer: PBS with 0.02% sodium azide, 50% glycerol, pH7.3.

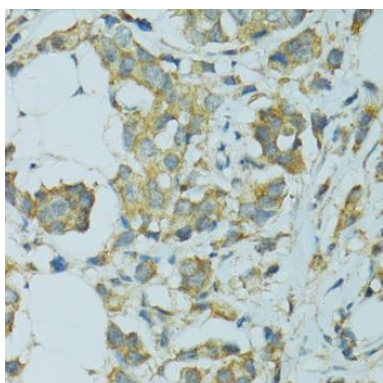
Product Images



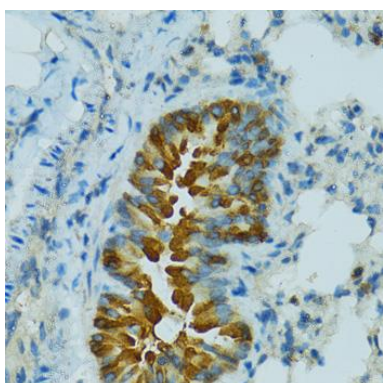
Western blot analysis of extracts of various cell lines, using CYP2B6 antibody (CAB1463) at 1:1000 dilution. Secondary antibody: HRP Goat Anti-Rabbit IgG (H+L) (CABS014) at 1:10000 dilution. Lysates/proteins: 25ug per lane. Blocking buffer: 3% nonfat dry milk in TBST. Detection: ECL Enhanced Kit (CABM00021). Exposure time: 90s.



Immunohistochemistry of paraffin-embedded human colon using CYP2B6 antibody (CAB1463) at dilution of 1:100 (40x lens).



Immunohistochemistry of paraffin-embedded human breast cancer using CYP2B6 antibody (CAB1463) at dilution of 1:100 (40x lens).



Immunohistochemistry of paraffin-embedded mouse lung using CYP2B6 antibody (CAB1463) at dilution of 1:100 (40x lens).