

# CREB5 Rabbit Polyclonal Antibody



CAB14635

---

## Product Information

### Size:

20uL, 50uL, 100uL, 200uL

### Observed MW:

57kDa

### Calculated MW:

41kDa/53kDa/56kDa

### Applications:

WB

### Reactivity:

Human, Rat

## Protein Background

The product of this gene belongs to the CRE (cAMP response element)-binding protein family. Members of this family contain zinc-finger and bZIP DNA-binding domains. The encoded protein specifically binds to CRE as a homodimer or a heterodimer with c-Jun or CRE-BP1, and functions as a CRE-dependent trans-activator. Alternatively spliced transcript variants encoding different isoforms have been identified.

## Immunogen information

### Gene ID:

9586

### Uniprot

Q02930

### Synonyms:

CREB5; CRE-BPA; CREB-5

## Antibody Information

### Recommended dilutions:

WB 1:500 - 1:2000

### Source:

Rabbit

### Isotype:

IgG

### Purification:

Affinity purification

### Immunogen:

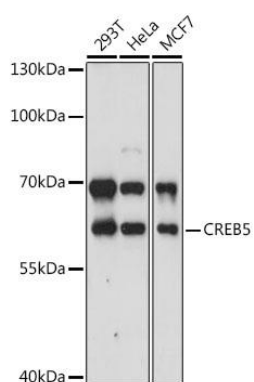
Recombinant fusion protein containing a sequence corresponding to amino acids 210-330 of human CREB5 (NP\_878902.2).

### Storage:

Store at -20°C. Avoid freeze / thaw cycles. Buffer: PBS with 0.02% sodium azide, 50% glycerol, pH7.3.

## Product Images

---



Western blot analysis of extracts of various cell lines, using CREB5 antibody (CAB14635) at 1:3000 dilution. Secondary antibody: HRP Goat Anti-Rabbit IgG (H+L) (CABS014) at 1:10000 dilution. Lysates/proteins: 25ug per lane. Blocking buffer: 3% nonfat dry milk in TBST. Detection: ECL Basic Kit (CABM00020). Exposure time: 30s.