

# USP20 Rabbit Polyclonal Antibody



CAB14643

---

## Product Information

### Size:

20uL, 50uL, 100uL, 200uL

### Observed MW:

110kDa

### Calculated MW:

102kDa

### Applications:

WB

### Reactivity:

Human

## Protein Background

This gene encodes a ubiquitin specific processing protease that was first identified as a substrate of the VHL (von Hippel-Lindau disease) protein E3 ubiquitin ligase complex. In addition to being ubiquitinated by the VHL-E3 ligase complex, this enzyme deubiquitinates hypoxia-inducible factor (HIF)-1 alpha and thereby causes increased expression of HIF-1alpha targeted genes which play a role in angiogenesis, glucose metabolism, cell proliferation and metastasis. The enzyme encoded by this gene also regulates G-protein coupled receptor signaling by mediating the deubiquitination of beta-2 adrenergic receptor (ADRB2). This enzyme is a ubiquitously expressed thiolester hydrolase. Alternative splicing results in multiple transcript variants encoding the same protein.

## Immunogen information

### Gene ID:

10868

### Uniprot

Q9Y2K6

## Antibody Information

### Recommended dilutions:

WB 1:500 - 1:2000

### Source:

Rabbit

### Isotype:

IgG

### Purification:

Affinity purification

### Synonyms:

USP20; LSFR3A; VDU2; hVDU2

### Immunogen:

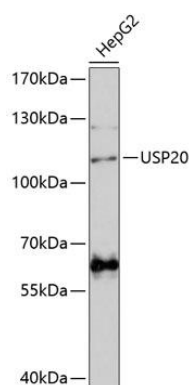
Recombinant fusion protein containing a sequence corresponding to amino acids 1-150 of human USP20 (NP\_006667.3).

### Storage:

Store at -20°C. Avoid freeze / thaw cycles. Buffer: PBS with 0.02% sodium azide, 50% glycerol, pH7.3.

## Product Images

---



Western blot analysis of extracts of HepG2 cells, using USP20 antibody (CAB14643) at 1:3000 dilution. Secondary antibody: HRP Goat Anti-Rabbit IgG (H+L) (CABS014) at 1:10000 dilution. Lysates/proteins: 25ug per lane. Blocking buffer: 3% nonfat dry milk in TBST. Detection: ECL Basic Kit (CABM00020). Exposure time: 90s.