

SLC19A1 Rabbit Polyclonal Antibody



CAB14644

Product Information

Size:

20uL, 50uL, 100uL, 200uL

Observed MW:

Refer to figures

Calculated MW:

54kDa/60kDa/64kDa

Applications:

WB IHC

Reactivity:

Human, Mouse, Rat

Protein Background

The membrane protein encoded by this gene is a transporter of folate and is involved in the regulation of intracellular concentrations of folate. Three transcript variants encoding different isoforms have been found for this gene.

Immunogen information

Gene ID:

6573

Uniprot

P41440

Synonyms:

SLC19A1; CHMD; FOLT; IFC1; REFC; RFC1

Antibody Information

Recommended dilutions:

WB 1:500 - 1:2000 IHC 1:50
- 1:200

Source:

Rabbit

Isotype:

IgG

Purification:

Affinity purification

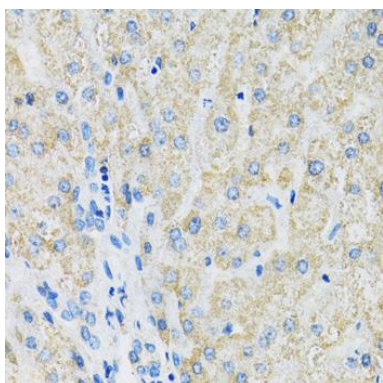
Immunogen:

Recombinant fusion protein containing a sequence corresponding to amino acids 452-591 of human SLC19A1 (NP_919231.1).

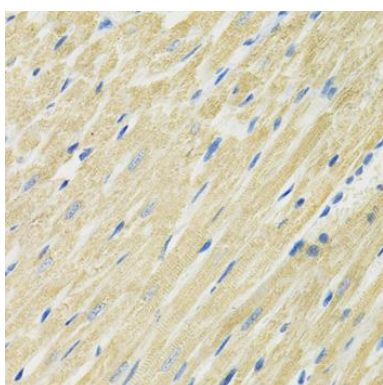
Storage:

Store at -20°C. Avoid freeze / thaw cycles. Buffer: PBS with 0.02% sodium azide, 50% glycerol, pH7.3.

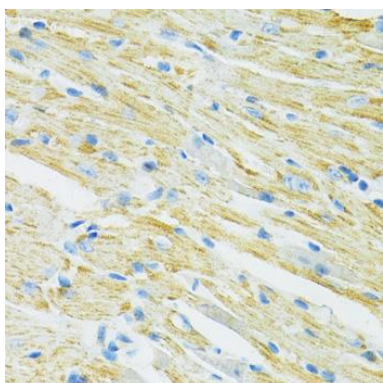
Product Images



Immunohistochemistry of paraffin-embedded human liver using SLC19A1 antibody (CAB14644) at dilution of 1:100 (40x lens).



Immunohistochemistry of paraffin-embedded rat heart using SLC19A1 antibody (CAB14644) at dilution of 1:100 (40x lens).



Immunohistochemistry of paraffin-embedded mouse heart using SLC19A1 antibody (CAB14644) at dilution of 1:100 (40x lens).