

CDH18 Rabbit Polyclonal Antibody



CAB14645

Product Information

Size:

20uL, 50uL, 100uL, 200uL

Observed MW:

Calculated MW:

63kDa/88kDa

Applications:

IHC

Reactivity:

Human, Mouse, Rat

Antibody Information

Recommended dilutions:

IHC 1:50 - 1:200

Source:

Rabbit

Isotype:

IgG

Purification:

Affinity purification

Protein Background

This gene encodes a type II classical cadherin from the cadherin superfamily of integral membrane proteins that mediate calcium-dependent cell-cell adhesion. Mature cadherin proteins are composed of a large N-terminal extracellular domain, a single membrane-spanning domain, and a small, highly conserved C-terminal cytoplasmic domain. Type II (atypical) cadherins are defined based on their lack of a HAV cell adhesion recognition sequence specific to type I cadherins. This particular cadherin is expressed specifically in the central nervous system and is putatively involved in synaptic adhesion, axon outgrowth and guidance. Alternatively spliced transcript variants encoding different isoforms have been found for this gene.

Immunogen information

Gene ID:

1016

Uniprot

Q13634

Synonyms:

CDH18; CDH14; CDH14L; CDH24

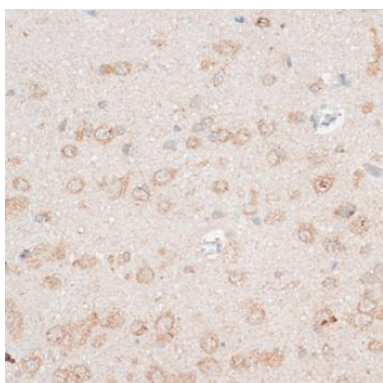
Immunogen:

Recombinant fusion protein containing a sequence corresponding to amino acids 300-500 of human CDH18 (NP_004925.1).

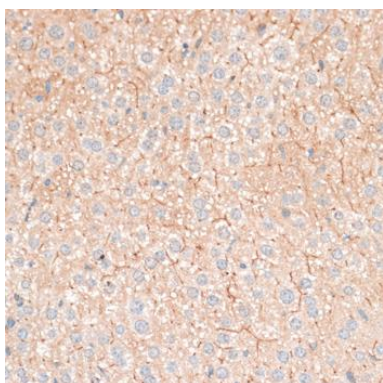
Storage:

Store at -20°C. Avoid freeze / thaw cycles. Buffer: PBS with 0.02% sodium azide, 50% glycerol, pH7.3.

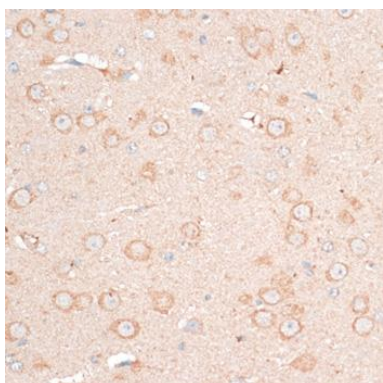
Product Images



Immunohistochemistry of paraffin-embedded rat brain using CDH18 antibody (CAB14645) at dilution of 1:100 (40x lens).



Immunohistochemistry of paraffin-embedded mouse liver using CDH18 antibody (CAB14645) at dilution of 1:100 (40x lens).



Immunohistochemistry of paraffin-embedded mouse brain using CDH18 antibody (CAB14645) at dilution of 1:100 (40x lens).