

# PDGFD Rabbit Polyclonal Antibody



CAB14653

## Product Information

### Size:

20uL, 50uL, 100uL, 200uL

### Observed MW:

### Calculated MW:

42kDa

### Applications:

IHC

### Reactivity:

Mouse, Rat

## Protein Background

The protein encoded by this gene is a member of the platelet-derived growth factor family. The four members of this family are mitogenic factors for cells of mesenchymal origin and are characterized by a core motif of eight cysteines, seven of which are found in this factor. This gene product only forms homodimers and, therefore, does not dimerize with the other three family members. It differs from alpha and beta members of this family in having an unusual N-terminal domain, the CUB domain. Two splice variants have been identified for this gene.

## Immunogen information

### Gene ID:

80310

### Uniprot

Q9GZP0

### Synonyms:

PDGFD; IEGF; MSTP036; SCDGF-B; SCDGFB

## Antibody Information

### Recommended dilutions:

IHC 1:50 - 1:200

### Source:

Rabbit

### Isotype:

IgG

### Purification:

Affinity purification

### Immunogen:

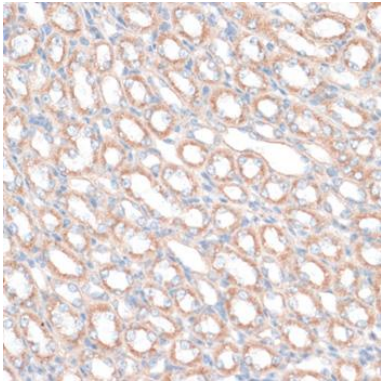
Recombinant fusion protein containing a sequence corresponding to amino acids 185-364 of human PDGFD (NP\_149126.1).

### Storage:

Store at -20°C. Avoid freeze / thaw cycles. Buffer: PBS with 0.02% sodium azide, 50% glycerol, pH7.3.

## Product Images

---



Immunohistochemistry of paraffin-embedded mouse kidney using PDGFD antibody (CAB14653) at dilution of 1:100 (40x lens).