

# NDUFAB1 Rabbit Polyclonal Antibody



**CAB14657**

---

## Product Information

### Size:

20uL, 50uL, 100uL, 200uL

### Observed MW:

13kDa

### Calculated MW:

17Da

### Applications:

WB IHC

### Reactivity:

Human, Mouse, Rat

## Antibody Information

### Recommended dilutions:

WB 1:500 - 1:2000 IHC 1:50  
- 1:200

### Source:

Rabbit

### Isotype:

IgG

### Purification:

Affinity purification

## Protein Background

### Immunogen information

#### Gene ID:

4706

#### Uniprot

O14561

#### Synonyms:

NDUFAB1; ACP; ACP1; FASN2A; SDAP

#### Immunogen:

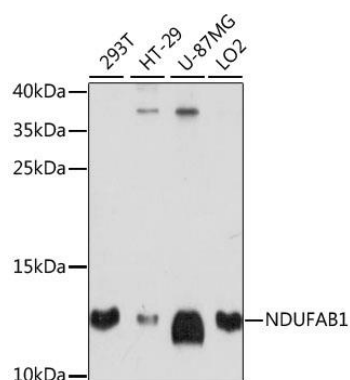
A synthetic peptide corresponding to a sequence within amino acids 50-150 of human NDUFAB1 (NP\_004994.1).

#### Storage:

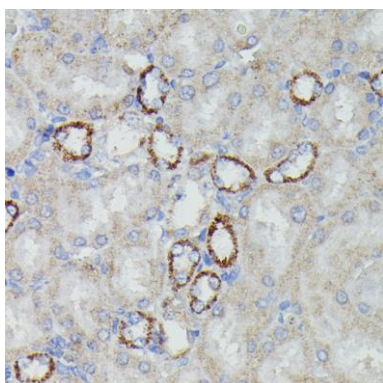
Store at -20°C. Avoid freeze / thaw cycles. Buffer: PBS with 0.02% sodium azide, 50% glycerol, pH7.3.

## Product Images

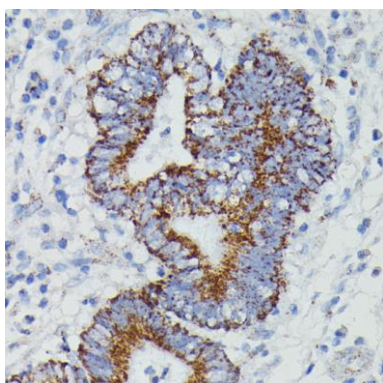
---



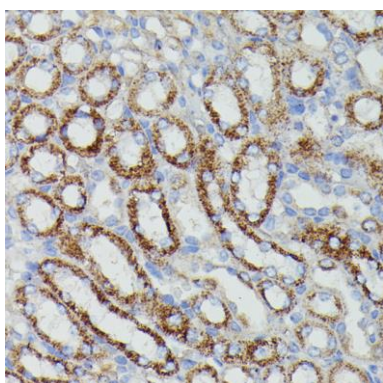
Western blot analysis of extracts of various cell lines, using NDUFAB1 antibody (CAB14657) at 1:1000 dilution. Secondary antibody: HRP Goat Anti-Rabbit IgG (H+L) (CABS014) at 1:10000 dilution. Lysates/proteins: 25ug per lane. Blocking buffer: 3% nonfat dry milk in TBST. Detection: ECL Enhanced Kit (CABM00021). Exposure time: 90s.



Immunohistochemistry of paraffin-embedded rat kidney using NDUFAB1 antibody (CAB14657) at dilution of 1:100 (40x lens).



Immunohistochemistry of paraffin-embedded human colon carcinoma using NDUFAB1 antibody (CAB14657) at dilution of 1:100 (40x lens).



Immunohistochemistry of paraffin-embedded mouse kidney using NDUFAB1 antibody (CAB14657) at dilution of 1:100 (40x lens).