

# GLI1 Rabbit Polyclonal Antibody



CAB14675

---

## Product Information

### Size:

20uL, 50uL, 100uL, 200uL

### Observed MW:

130kDa/160kDa

### Calculated MW:

104kDa/113kDa/117kDa

### Applications:

WB IHC IF

### Reactivity:

Human, Mouse, Rat

## Protein Background

This gene encodes a member of the Kruppel family of zinc finger proteins. The encoded transcription factor is activated by the sonic hedgehog signal transduction cascade and regulates stem cell proliferation. The activity and nuclear localization of this protein is negatively regulated by p53 in an inhibitory loop. Multiple transcript variants encoding different isoforms have been found for this gene.

## Immunogen information

### Gene ID:

2735

### Uniprot

P08151

### Synonyms:

GLI1; GLI

## Antibody Information

### Recommended dilutions:

WB 1:500 - 1:2000 IHC 1:50  
- 1:200 IF 1:50 - 1:200

### Source:

Rabbit

### Isotype:

IgG

### Purification:

Affinity purification

### Immunogen:

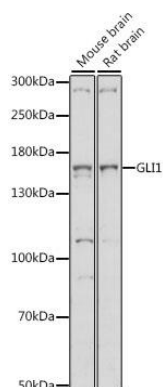
A synthetic peptide corresponding to a sequence within amino acids 200-300 of human GLI1 (NP\_001153517.1).

### Storage:

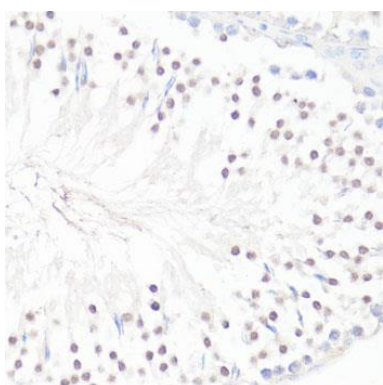
Store at -20°C. Avoid freeze / thaw cycles. Buffer: PBS with 0.02% sodium azide, 50% glycerol, pH7.3.

## Product Images

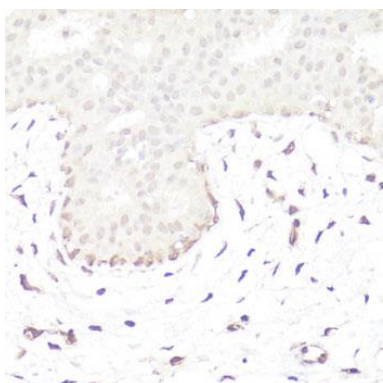
---



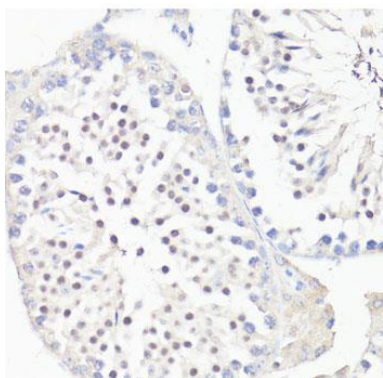
Western blot analysis of extracts of various cell lines, using GLI1 antibody (CAB14675) at 1:1000 dilution. Secondary antibody: HRP Goat Anti-Rabbit IgG (H+L) (CABS014) at 1:10000 dilution. Lysates/proteins: 25ug per lane. Blocking buffer: 3% nonfat dry milk in TBST. Detection: ECL Basic Kit (CABM00020). Exposure time: 90s.



Immunohistochemistry of paraffin-embedded rat testis using GLI1 antibody (CAB14675) at dilution of 1:100 (40x lens).



Immunohistochemistry of paraffin-embedded human mammary cancer using GLI1 antibody (CAB14675) at dilution of 1:100 (40x lens).



Immunohistochemistry of paraffin-embedded mouse testis using GLI1 antibody (CAB14675) at dilution of 1:100 (40x lens).