

APOA2 Rabbit Polyclonal Antibody



CAB14690

Product Information

Size:

20uL, 50uL, 100uL, 200uL

Observed MW:

11kDa

Calculated MW:

11kDa

Applications:

WB IF

Reactivity:

Human, Mouse, Rat

Protein Background

This gene encodes apolipoprotein (apo-) A-II, which is the second most abundant protein of the high density lipoprotein particles. The protein is found in plasma as a monomer, homodimer, or heterodimer with apolipoprotein D. Defects in this gene may result in apolipoprotein A-II deficiency or hypercholesterolemia.

Immunogen information

Gene ID:

336

Uniprot

P02652

Synonyms:

APOA2; Apo-All; ApoA-II; apoAll

Antibody Information

Recommended dilutions:

WB 1:500 - 1:2000 IF 1:50 - 1:200

Source:

Rabbit

Isotype:

IgG

Purification:

Affinity purification

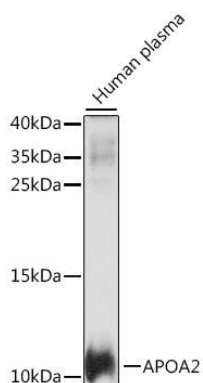
Immunogen:

A synthetic peptide corresponding to a sequence within amino acids 1-100 of human APOA2 (NP_001634.1).

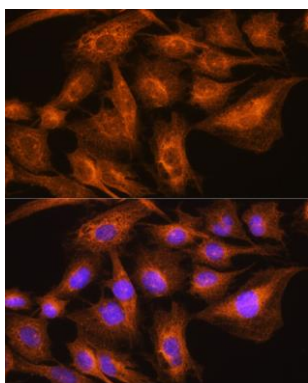
Storage:

Store at -20°C. Avoid freeze / thaw cycles. Buffer: PBS with 0.02% sodium azide, 50% glycerol, pH7.3.

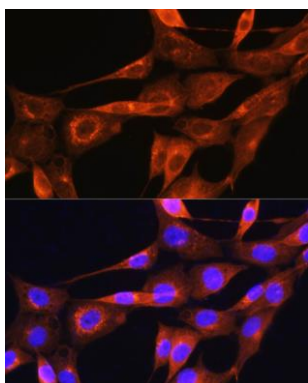
Product Images



Western blot analysis of extracts of human plasma, using APOA2 antibody (CAB14690) at 1:1000 dilution. Secondary antibody: HRP Goat Anti-Rabbit IgG (H+L) (CABS014) at 1:10000 dilution. Lysates/proteins: 25ug per lane. Blocking buffer: 3% nonfat dry milk in TBST. Detection: ECL Basic Kit (CABM00020). Exposure time: 1s.



Immunofluorescence analysis of C6 cells using APOA2 Rabbit pAb (CAB14690) at dilution of 1:100. Blue: DAPI for nuclear staining.



Immunofluorescence analysis of NIH/3T3 cells using APOA2 Rabbit pAb (CAB14690) at dilution of 1:100. Blue: DAPI for nuclear staining.