

KDM7A Rabbit Polyclonal Antibody



CAB14692

Product Information

Size:

20uL, 50uL, 100uL, 200uL

Observed MW:

Calculated MW:

106kDa

Applications:

IF

Reactivity:

Human

Antibody Information

Recommended dilutions:

IF 1:50 - 1:200

Source:

Rabbit

Isotype:

IgG

Purification:

Affinity purification

Protein Background

Immunogen information

Gene ID:

338523

Uniprot

Synonyms:

KDM7A; JHDM1D

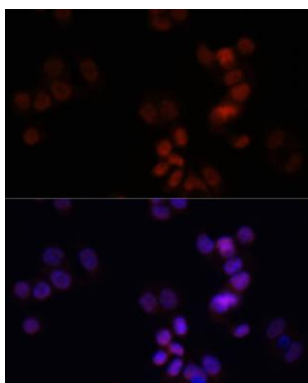
Immunogen:

Recombinant fusion protein containing a sequence corresponding to amino acids 417-735 of mouse KDM7A (NP_001028602.2).

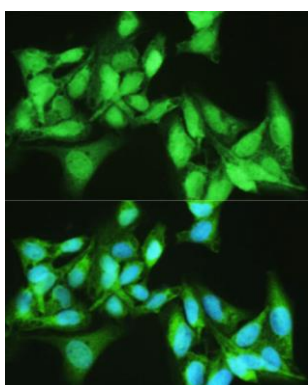
Storage:

Store at -20°C. Avoid freeze / thaw cycles. Buffer: PBS with 0.02% sodium azide, 50% glycerol, pH7.3.

Product Images



Immunofluorescence analysis of HCT116 cells using KDM7A antibody (CAB14692) at dilution of 1:150. Blue: DAPI for nuclear staining.



Immunofluorescence analysis of U2OS cells using KDM7A antibody (CAB14692) at dilution of 1:100. Blue: DAPI for nuclear staining.