

ABCB11 Rabbit Polyclonal Antibody



CAB14694

Product Information

Size:

20uL, 50uL, 100uL, 200uL

Observed MW:

146kDa

Calculated MW:

146kDa

Applications:

WB IF

Reactivity:

Human, Mouse, Rat

Antibody Information

Recommended dilutions:

WB 1:500 - 1:2000 IF 1:50 - 1:200

Source:

Rabbit

Isotype:

IgG

Purification:

Affinity purification

Protein Background

The membrane-associated protein encoded by this gene is a member of the superfamily of ATP-binding cassette (ABC) transporters. ABC proteins transport various molecules across extra- and intra-cellular membranes. ABC genes are divided into seven distinct subfamilies (ABC1, MDR/TAP, MRP, ALD, OABP, GCN20, White). This protein is a member of the MDR/TAP subfamily. Members of the MDR/TAP subfamily are involved in multidrug resistance. The protein encoded by this gene is the major canalicular bile salt export pump in man. Mutations in this gene cause a form of progressive familial intrahepatic cholestases which are a group of inherited disorders with severe cholestatic liver disease from early infancy.

Immunogen information

Gene ID:

8647

Uniprot

O95342

Synonyms:

ABCB11; ABC16; BRIC2; BSEP; PFIC-2; PFIC2; PGY4; SPGP

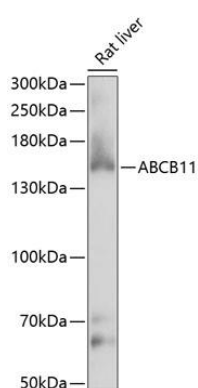
Immunogen:

A synthetic peptide corresponding to a sequence within amino acids 1050-1150 of human ABCB11 (NP_003733.2).

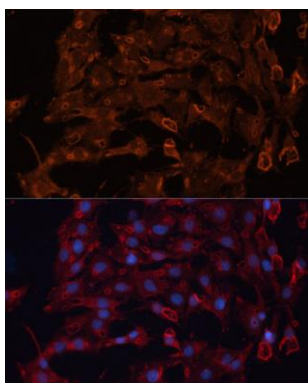
Storage:

Store at -20°C. Avoid freeze / thaw cycles. Buffer: PBS with 0.02% sodium azide, 50% glycerol, pH7.3.

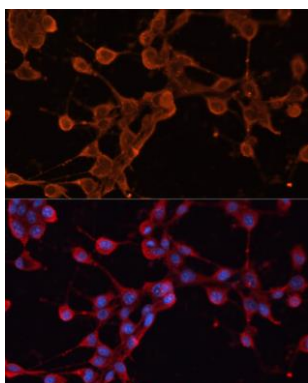
Product Images



Western blot analysis of extracts of rat liver, using ABCB11 antibody (CAB14694) at 1:1000 dilution. Secondary antibody: HRP Goat Anti-Rabbit IgG (H+L) (CABS014) at 1:10000 dilution. Lysates/proteins: 25ug per lane. Blocking buffer: 3% nonfat dry milk in TBST. Detection: ECL Enhanced Kit (CABM00021). Exposure time: 1s.



Immunofluorescence analysis of C6 cells using ABCB11 antibody (CAB14694) at dilution of 1:100. Blue: DAPI for nuclear staining.



Immunofluorescence analysis of NIH/3T3 cells using ABCB11 antibody (CAB14694) at dilution of 1:100. Blue: DAPI for nuclear staining.