

# ABCB7 Rabbit Polyclonal Antibody



CAB14699

## Product Information

### Size:

20uL, 50uL, 100uL, 200uL

### Observed MW:

83kDa

### Calculated MW:

78kDa/82kDa

### Applications:

WB IHC IF

### Reactivity:

Human, Mouse, Rat

## Antibody Information

### Recommended dilutions:

WB 1:500 - 1:2000 IHC 1:50  
- 1:200 IF 1:50 - 1:200

### Source:

Rabbit

### Isotype:

IgG

### Purification:

Affinity purification

## Protein Background

The membrane-associated protein encoded by this gene is a member of the superfamily of ATP-binding cassette (ABC) transporters. ABC proteins transport various molecules across extra- and intra-cellular membranes. ABC genes are divided into seven distinct subfamilies (ABC1, MDR/TAP, MRP, ALD, OABP, GCN20, White). This protein is a member of the MDR/TAP subfamily. Members of the MDR/TAP subfamily are involved in multidrug resistance as well as antigen presentation. This gene encodes a half-transporter involved in the transport of heme from the mitochondria to the cytosol. With iron/sulfur cluster precursors as its substrates, this protein may play a role in metal homeostasis. Mutations in this gene have been associated with mitochondrial iron accumulation and isodicentric (X)(q13) and sideroblastic anemia. Alternatively spliced transcript variants encoding multiple isoforms have been observed for this gene.

## Immunogen information

### Gene ID:

22

### Uniprot

O75027

### Synonyms:

ABCB7; ABC7; ASAT; Atm1p; EST140535

### Immunogen:

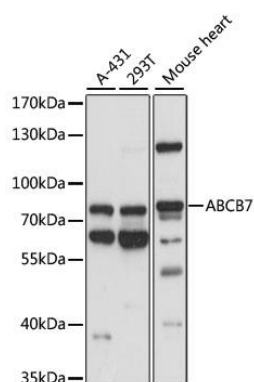
Recombinant fusion protein containing a sequence corresponding to amino acids 503-753 of human ABCB7 (NP\_004290.2).

### Storage:

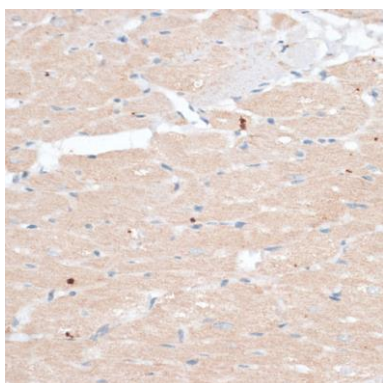
Store at -20°C. Avoid freeze / thaw cycles. Buffer: PBS with 0.02% sodium azide, 50% glycerol, pH7.3.

## Product Images

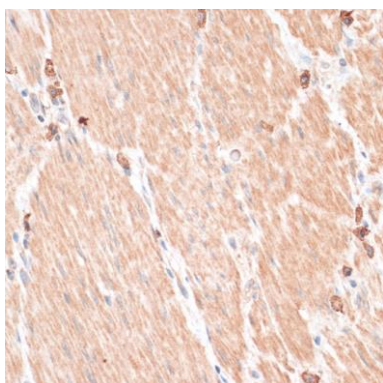
---



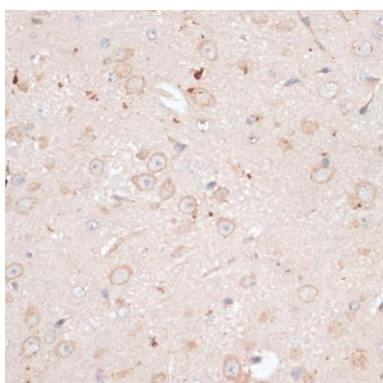
Western blot analysis of extracts of various cell lines, using ABCB7 antibody (CAB14699) at 1:1000 dilution. Secondary antibody: HRP Goat Anti-Rabbit IgG (H+L) (CABS014) at 1:10000 dilution. Lysates/proteins: 25ug per lane. Blocking buffer: 3% nonfat dry milk in TBST. Detection: ECL Basic Kit (CABM00020). Exposure time: 10s.



Immunohistochemistry of paraffin-embedded rat heart using ABCB7 antibody (CAB14699) at dilution of 1:100 (40x lens).



Immunohistochemistry of paraffin-embedded human gastric cancer using ABCB7 antibody (CAB14699) at dilution of 1:100 (40x lens).



Immunohistochemistry of paraffin-embedded mouse brain using ABCB7 antibody (CAB14699) at dilution of 1:100 (40x lens).