

ALDH3B2 Rabbit Polyclonal Antibody



CAB14702

Product Information

Size:

20uL, 50uL, 100uL, 200uL

Observed MW:

48KDa

Calculated MW:

42kDa

Applications:

WB IHC

Reactivity:

Human, Rat

Protein Background

This gene encodes a member of the aldehyde dehydrogenase family, a group of isozymes that may play a major role in the detoxification of aldehydes generated by alcohol metabolism and lipid peroxidation. The gene of this particular family member is over 10 kb in length. The expression of these transcripts is restricted to the salivary gland among the human tissues examined. Alternate transcriptional splice variants have been characterized.

Immunogen information

Gene ID:

222

Uniprot

P48448

Synonyms:

ALDH3B2; ALDH8

Antibody Information

Recommended dilutions:

WB 1:500 - 1:2000 IHC 1:50
- 1:200

Source:

Rabbit

Isotype:

IgG

Purification:

Affinity purification

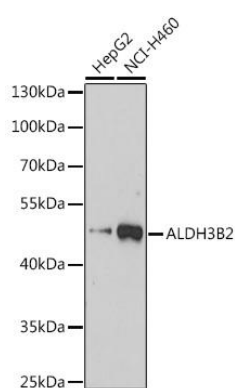
Immunogen:

Recombinant fusion protein containing a sequence corresponding to amino acids 296-385 of human ALDH3B2 (NP_000686.2).

Storage:

Store at -20°C. Avoid freeze / thaw cycles. Buffer: PBS with 0.02% sodium azide, 50% glycerol, pH7.3.

Product Images



Western blot analysis of extracts of various cell lines, using ALDH3B2 antibody (CAB14702) at 1:3000 dilution. Secondary antibody: HRP Goat Anti-Rabbit IgG (H+L) (CABS014) at 1:10000 dilution. Lysates/proteins: 25ug per lane. Blocking buffer: 3% nonfat dry milk in TBST. Detection: ECL Basic Kit (CABM00020). Exposure time: 90s.