

# ALOX12 Rabbit Polyclonal Antibody



CAB14703

---

## Product Information

### Size:

20uL, 50uL, 100uL, 200uL

### Observed MW:

### Calculated MW:

75kDa

### Applications:

IHC IF

### Reactivity:

Human, Mouse, Rat

## Antibody Information

### Recommended dilutions:

IHC 1:50 - 1:200 IF 1:50 - 1:200

### Source:

Rabbit

### Isotype:

IgG

### Purification:

Affinity purification

## Protein Background

### Immunogen information

#### Gene ID:

239

#### Uniprot

P18054

#### Synonyms:

ALOX12; 12-LOX; 12S-LOX; LOG12; 12S-type

#### Immunogen:

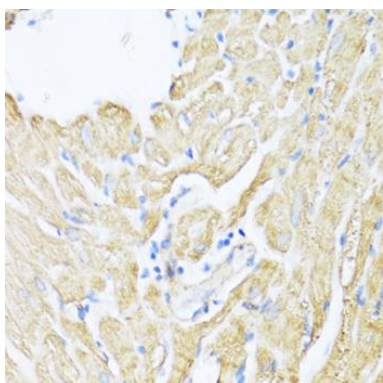
Recombinant fusion protein containing a sequence corresponding to amino acids 483-663 of human ALOX12 (NP\_000688.2).

#### Storage:

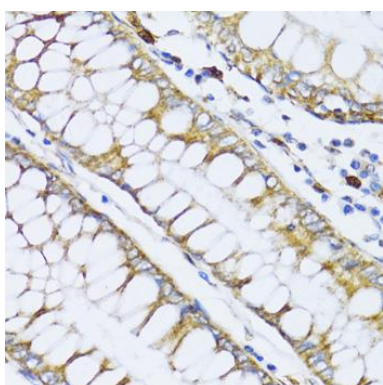
Store at -20°C. Avoid freeze / thaw cycles. Buffer: PBS with 0.02% sodium azide, 50% glycerol, pH7.3.

## Product Images

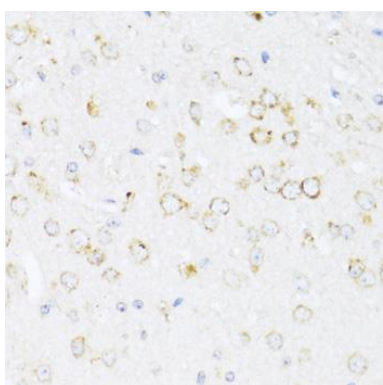
---



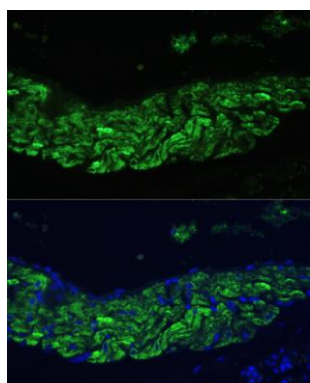
Immunohistochemistry of paraffin-embedded rat heart using ALOX12 antibody (CAB14703) at dilution of 1:100 (40x lens).



Immunohistochemistry of paraffin-embedded human colon carcinoma using ALOX12 antibody (CAB14703) at dilution of 1:100 (40x lens).



Immunohistochemistry of paraffin-embedded mouse brain using ALOX12 antibody (CAB14703) at dilution of 1:100 (40x lens).



Immunofluorescence analysis of rat lung using ALOX12 Polyclonal Antibody (CAB14703) at dilution of 1:100 (40x lens). Blue: DAPI for nuclear staining.