

# CALM1 Rabbit Polyclonal Antibody



CAB14711

## Product Information

### Size:

20uL, 50uL, 100uL, 200uL

### Observed MW:

### Calculated MW:

16kDa

### Applications:

IHC IF

### Reactivity:

Human, Mouse, Rat

## Antibody Information

### Recommended dilutions:

IHC 1:50 - 1:200 IF 1:50 - 1:200

### Source:

Rabbit

### Isotype:

IgG

### Purification:

Affinity purification

## Protein Background

This gene encodes a member of the EF-hand calcium-binding protein family. It is one of three genes which encode an identical calcium binding protein which is one of the four subunits of phosphorylase kinase. Two pseudogenes have been identified on chromosome 7 and X. Multiple transcript variants encoding different isoforms have been found for this gene.

## Immunogen information

### Gene ID:

801

### Uniprot

P62158

### Synonyms:

CALM1; CALML2; CAMI; CPVT4; DD132; LQT14; PHKD; caM

### Immunogen:

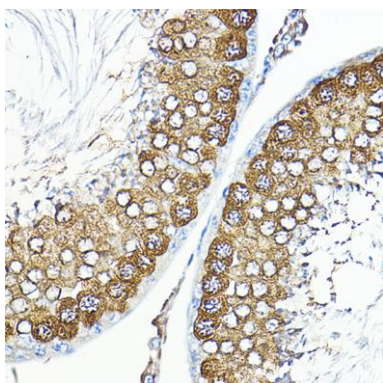
Recombinant fusion protein containing a sequence corresponding to amino acids 1-149 of human CALM1 (NP\_001734.1).

### Storage:

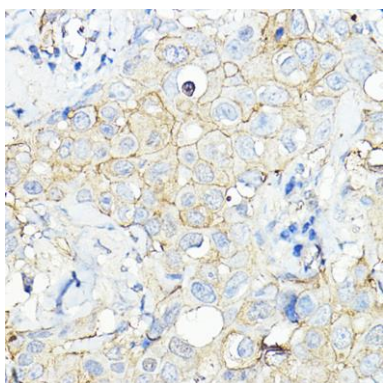
Store at -20°C. Avoid freeze / thaw cycles. Buffer: PBS with 0.02% sodium azide, 50% glycerol, pH7.3.

## Product Images

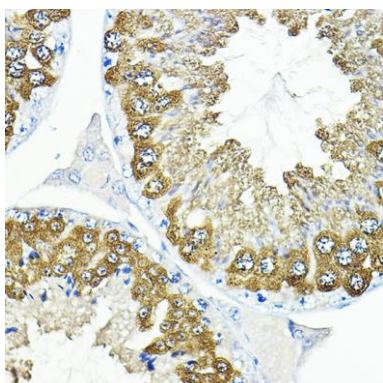
---



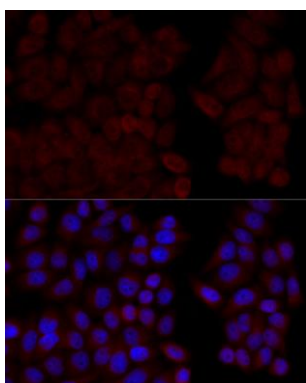
Immunohistochemistry of paraffin-embedded rat testis using CALM1 Rabbit pAb (CAB14711) at dilution of 1:100 (40x lens).



Immunohistochemistry of paraffin-embedded human breast cancer using CALM1 Rabbit pAb (CAB14711) at dilution of 1:100 (40x lens).



Immunohistochemistry of paraffin-embedded mouse testis using CALM1 Rabbit pAb (CAB14711) at dilution of 1:100 (40x lens).



Immunofluorescence analysis of HeLa cells using CALM1 Polyclonal Antibody (CAB14711) at dilution of 1:100 (40x lens). Blue: DAPI for nuclear staining.