

# CD36 Rabbit Polyclonal Antibody



CAB14714

## Product Information

### Size:

20uL, 50uL, 100uL, 200uL

### Observed MW:

70-110kDa

### Calculated MW:

32kDa/46kDa/48kDa/53kDa

### Applications:

WB IF

### Reactivity:

Human, Mouse, Rat

## Antibody Information

### Recommended dilutions:

WB 1:500 - 1:2000 IF 1:50 - 1:200

### Source:

Rabbit

### Isotype:

IgG

### Purification:

Affinity purification

## Protein Background

The protein encoded by this gene is the fourth major glycoprotein of the platelet surface and serves as a receptor for thrombospondin in platelets and various cell lines. Since thrombospondins are widely distributed proteins involved in a variety of adhesive processes, this protein may have important functions as a cell adhesion molecule. It binds to collagen, thrombospondin, anionic phospholipids and oxidized LDL. It directly mediates cytoadherence of Plasmodium falciparum parasitized erythrocytes and it binds long chain fatty acids and may function in the transport and/or as a regulator of fatty acid transport. Mutations in this gene cause platelet glycoprotein deficiency. Multiple alternatively spliced transcript variants have been found for this gene.

## Immunogen information

### Gene ID:

948

### Uniprot

P16671

### Synonyms:

BDPLT10; CHDS7; FAT; GP3B; GP4; GPIV; PASIV; SCARB3; CD36

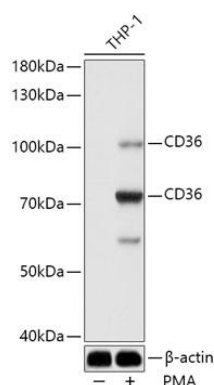
### Immunogen:

Recombinant fusion protein containing a sequence corresponding to amino acids 301-400 of human CD36 (NP\_001120916.1).

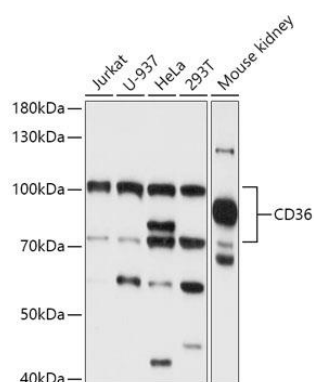
### Storage:

Store at -20°C. Avoid freeze / thaw cycles. Buffer: PBS with 0.02% sodium azide, 50% glycerol, pH7.3.

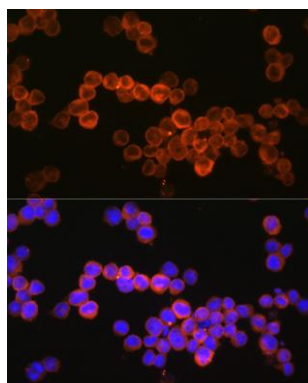
## Product Images



Western blot analysis of extracts of THP-1 cells, using CD36 antibody (CAB14714) at 1:1000 dilution. THP-1 cells were treated by PMA (80 nM) at 37°C for overnight. Secondary antibody: HRP Goat Anti-Rabbit IgG (H+L) (CABS014) at 1:10000 dilution. Lysates/proteins: 25ug per lane. Blocking buffer: 3% nonfat dry milk in TBST. Detection: ECL Basic Kit (CABM00020). Exposure time: 15s.



Western blot analysis of extracts of various cell lines, using CD36 antibody (CAB14714) at 1:1000 dilution. Secondary antibody: HRP Goat Anti-Rabbit IgG (H+L) (CABS014) at 1:10000 dilution. Lysates/proteins: 25ug per lane. Blocking buffer: 3% nonfat dry milk in TBST. Detection: ECL Basic Kit (CABM00020). Exposure time: 15s.



Immunofluorescence analysis of U937 cells using CD36 Rabbit pAb (CAB14714) at dilution of 1:150 (40x lens). Blue: DAPI for nuclear staining.