

CDK11B Rabbit Polyclonal Antibody



CAB14715

Product Information

Size:

20uL, 50uL, 100uL, 200uL

Observed MW:

Calculated MW:

49-92kDa

Applications:

IHC IF

Reactivity:

Human, Mouse, Rat

Antibody Information

Recommended dilutions:

IHC 1:50 - 1:200 IF 1:50 - 1:200

Source:

Rabbit

Isotype:

IgG

Purification:

Affinity purification

Protein Background

This gene encodes a member of the serine/threonine protein kinase family. Members of this kinase family are known to be essential for eukaryotic cell cycle control. Due to a segmental duplication, this gene shares very high sequence identity with a neighboring gene. These two genes are frequently deleted or altered in neuroblastoma. The protein kinase encoded by this gene can be cleaved by caspases and may play a role in cell apoptosis. Alternative splicing results in multiple transcript variants.

Immunogen information

Gene ID:

984

Uniprot

P21127

Synonyms:

CDK11B; CDC2L1; CDK11; CDK11-p110; CDK11-p46; CDK11-p58; CLK-1; PITSLREA; PK58; p58; p58CDC2L1; p58CLK-1

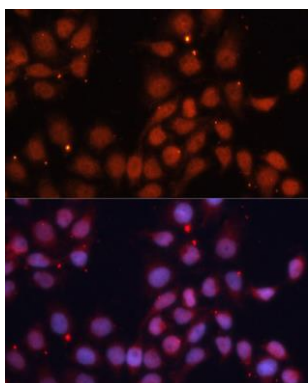
Immunogen:

Recombinant fusion protein containing a sequence corresponding to amino acids 1-130 of human CDK11B (NP_277021.2).

Storage:

Store at -20°C. Avoid freeze / thaw cycles. Buffer: PBS with 0.02% sodium azide, 50% glycerol, pH7.3.

Product Images



Immunofluorescence analysis of HeLa cells using CDK11B antibody (CAB14715) at dilution of 1:100. Blue: DAPI for nuclear staining.