

# CDH9 Rabbit Polyclonal Antibody



CAB14716

## Product Information

### Size:

20uL, 50uL, 100uL, 200uL

### Observed MW:

120kDa

### Calculated MW:

88kDa

### Applications:

WB

### Reactivity:

Human

## Antibody Information

### Recommended dilutions:

WB 1:500 - 1:2000

### Source:

Rabbit

### Isotype:

IgG

### Purification:

Affinity purification

## Protein Background

This gene encodes a type II classical cadherin from the cadherin superfamily, integral membrane proteins that mediate calcium-dependent cell-cell adhesion. Mature cadherin proteins are composed of a large N-terminal extracellular domain, a single membrane-spanning domain, and a small, highly conserved C-terminal cytoplasmic domain. The extracellular domain consists of 5 subdomains, each containing a cadherin motif, and appears to determine the specificity of the protein's homophilic cell adhesion activity. Type II (atypical) cadherins are defined based on their lack of a HAV cell adhesion recognition sequence specific to type I cadherins.

## Immunogen information

### Gene ID:

1007

### Uniprot

Q9ULB4

### Synonyms:

CDH9

### Immunogen:

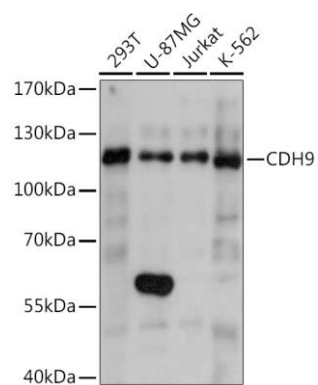
Recombinant fusion protein containing a sequence corresponding to amino acids 340-420 of human CDH9 (NP\_057363.3).

### Storage:

Store at -20°C. Avoid freeze / thaw cycles. Buffer: PBS with 0.02% sodium azide, 50% glycerol, pH7.3.

## Product Images

---



Western blot analysis of extracts of various cell lines, using CDH9 Rabbit pAb (CAB14716) at 1:1000 dilution. Secondary antibody: HRP Goat Anti-Rabbit IgG (H+L) (CABS014) at 1:10000 dilution. Lysates/proteins: 25ug per lane. Blocking buffer: 3% nonfat dry milk in TBST. Detection: ECL Basic Kit (CABM00020). Exposure time: 10s.