

DVL2 Rabbit Polyclonal Antibody



CAB14726

Product Information

Size:

20uL, 50uL, 100uL, 200uL

Observed MW:

Calculated MW:

78kDa

Applications:

IHC IF

Reactivity:

Human, Mouse, Rat

Antibody Information

Recommended dilutions:

IHC 1:50 - 1:200 IF 1:50 - 1:200

Source:

Rabbit

Isotype:

IgG

Purification:

Affinity purification

Protein Background

This gene encodes a member of the dishevelled (dsh) protein family. The vertebrate dsh proteins have approximately 40% amino acid sequence similarity with Drosophila dsh. This gene encodes a 90-kD protein that undergoes posttranslational phosphorylation to form a 95-kD cytoplasmic protein, which may play a role in the signal transduction pathway mediated by multiple Wnt proteins. The mechanisms of dishevelled function in Wnt signaling are likely to be conserved among metazoans.

Immunogen information

Gene ID:

1856

Uniprot

O14641

Synonyms:

DVL2

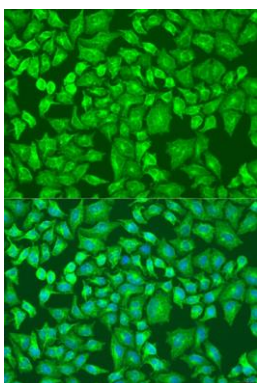
Immunogen:

Recombinant fusion protein containing a sequence corresponding to amino acids 1-240 of human DVL2 (NP_004413.1).

Storage:

Store at -20°C. Avoid freeze / thaw cycles. Buffer: PBS with 0.02% sodium azide, 50% glycerol, pH7.3.

Product Images



Immunofluorescence analysis of U2OS cells using DVL2 antibody (CAB14726) at dilution of 1:100. Blue: DAPI for nuclear staining.