

PHC2 Rabbit Polyclonal Antibody



CAB14727

Product Information

Size:

20uL, 50uL, 100uL, 200uL

Observed MW:

37kDa

Calculated MW:

30kDa/35kDa/87kDa/90kDa

Applications:

WB

Reactivity:

Human, Mouse

Antibody Information

Recommended dilutions:

WB 1:500 - 1:2000

Source:

Rabbit

Isotype:

IgG

Purification:

Affinity purification

Protein Background

In *Drosophila melanogaster*, the 'Polycomb' group (PcG) of genes are part of a cellular memory system that is responsible for the stable inheritance of gene activity. PcG proteins form a large multimeric, chromatin-associated protein complex. The protein encoded by this gene has homology to the *Drosophila* PcG protein 'polyhomeotic' (Ph) and is known to heterodimerize with EDR1 and colocalize with BMI1 in interphase nuclei of human cells. The specific function in human cells has not yet been determined. Two transcript variants encoding different isoforms have been found for this gene.

Immunogen information

Gene ID:

1912

Uniprot

Q8IXK0

Synonyms:

PHC2; EDR2; HPH2; PH2

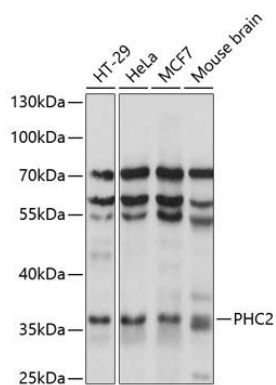
Immunogen:

Recombinant fusion protein containing a sequence corresponding to amino acids 1-240 of human PHC2 (NP_004418.2).

Storage:

Store at -20°C. Avoid freeze / thaw cycles. Buffer: PBS with 0.02% sodium azide, 50% glycerol, pH7.3.

Product Images



Western blot analysis of extracts of various cell lines, using PHC2 antibody (CAB14727) at 1:1000 dilution. Secondary antibody: HRP Goat Anti-Rabbit IgG (H+L) (CABS014) at 1:10000 dilution. Lysates/proteins: 25ug per lane. Blocking buffer: 3% nonfat dry milk in TBST. Detection: ECL Basic Kit (CABM00020). Exposure time: 5s.