

GNAQ Rabbit Polyclonal Antibody



CAB14736

Product Information

Size:

20uL, 50uL, 100uL, 200uL

Observed MW:

42kDa

Calculated MW:

42kDa

Applications:

WB IF

Reactivity:

Human, Mouse, Rat

Protein Background

This locus encodes a guanine nucleotide-binding protein. The encoded protein, an alpha subunit in the Gq class, couples a seven-transmembrane domain receptor to activation of phospholipase C-beta. Mutations at this locus have been associated with problems in platelet activation and aggregation. A related pseudogene exists on chromosome 2.

Immunogen information

Gene ID:

2776

Uniprot

P50148

Synonyms:

GNAQ; CMC1; G-ALPHA-q; GAQ; SWS

Antibody Information

Recommended dilutions:

WB 1:500 - 1:2000 IF 1:50 - 1:200

Source:

Rabbit

Isotype:

IgG

Purification:

Affinity purification

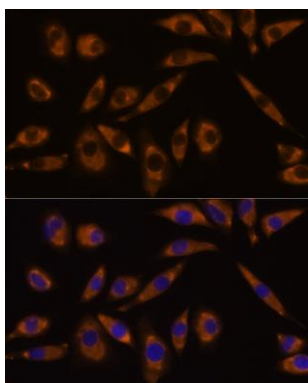
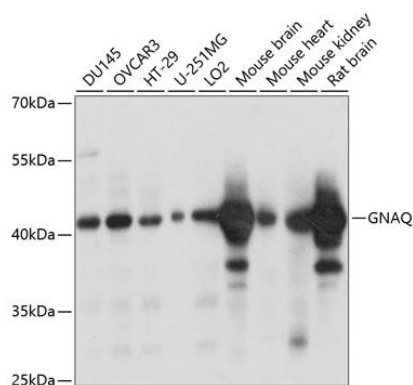
Immunogen:

Recombinant fusion protein containing a sequence corresponding to amino acids 1-359 of human GNAQ (NP_002063.2).

Storage:

Store at -20°C. Avoid freeze / thaw cycles. Buffer: PBS with 0.02% sodium azide, 50% glycerol, pH7.3.

Product Images



Western blot analysis of extracts of various cell lines, using GNAQ antibody (CAB14736) at 1:1000 dilution. Secondary antibody: HRP Goat Anti-Rabbit IgG (H+L) (CABS014) at 1:10000 dilution. Lysates/proteins: 25ug per lane. Blocking buffer: 3% nonfat dry milk in TBST. Detection: ECL Basic Kit (CABM00020). Exposure time: 1s.

Immunofluorescence analysis of L929 cells using GNAQ Rabbit pAb (CAB14736) at dilution of 1:100 (40x lens). Blue: DAPI for nuclear staining.