

GUCA1B Rabbit Polyclonal Antibody



CAB14739

Product Information

Size:

20uL, 50uL, 100uL, 200uL

Observed MW:

23kDa

Calculated MW:

23kDa

Applications:

WB

Reactivity:

Mouse, Rat

Protein Background

The protein encoded by this gene is a calcium-binding protein that activates photoreceptor guanylate cyclases. This gene may have arisen due to a gene duplication event since there is a highly similar gene clustered with it on chromosome 6. Mutations in this gene can cause a form of retinitis pigmentosa.

Immunogen information

Gene ID:

2979

Uniprot

Q9UMX6

Synonyms:

GUCA1B; GCAP2; GUCA2; RP48

Antibody Information

Recommended dilutions:

WB 1:500 - 1:2000

Source:

Rabbit

Isotype:

IgG

Purification:

Affinity purification

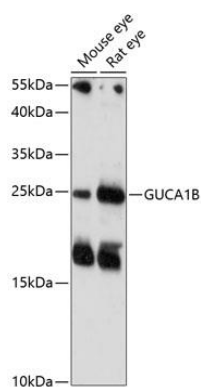
Immunogen:

Recombinant fusion protein containing a sequence corresponding to amino acids 1-200 of human GUCA1B (NP_002089.4).

Storage:

Store at -20°C. Avoid freeze / thaw cycles. Buffer: PBS with 0.02% sodium azide, 50% glycerol, pH7.3.

Product Images



Western blot analysis of extracts of various cell lines, using GUCA1B antibody (CAB14739) at 1:1000 dilution. Secondary antibody: HRP Goat Anti-Rabbit IgG (H+L) (CABS014) at 1:10000 dilution. Lysates/proteins: 25ug per lane. Blocking buffer: 3% nonfat dry milk in TBST. Detection: ECL Enhanced Kit (CABM00021). Exposure time: 3min.