

KRT12 Rabbit Polyclonal Antibody



CAB14746

Product Information

Size:

20uL, 50uL, 100uL, 200uL

Observed MW:

56kDa

Calculated MW:

53kDa

Applications:

WB

Reactivity:

Mouse, Rat

Antibody Information

Recommended dilutions:

WB 1:500 - 1:2000

Source:

Rabbit

Isotype:

IgG

Purification:

Affinity purification

Protein Background

KRT12 encodes the type I intermediate filament chain keratin 12, expressed in corneal epithelia. Mutations in this gene lead to Meesmann corneal dystrophy.

Immunogen information

Gene ID:

3859

Uniprot

Q99456

Synonyms:

KRT12; K12

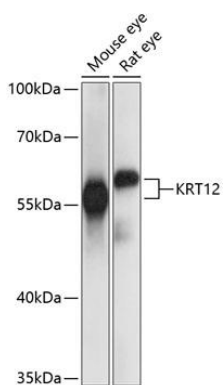
Immunogen:

Recombinant fusion protein containing a sequence corresponding to amino acids 295-494 of human KRT12 (NP_000214.1).

Storage:

Store at -20°C. Avoid freeze / thaw cycles. Buffer: PBS with 0.02% sodium azide, 50% glycerol, pH7.3.

Product Images



Western blot analysis of extracts of various cell lines, using KRT12 antibody (CAB14746) at 1:1000 dilution. Secondary antibody: HRP Goat Anti-Rabbit IgG (H+L) (CABS014) at 1:10000 dilution. Lysates/proteins: 25ug per lane. Blocking buffer: 3% nonfat dry milk in TBST. Detection: ECL Basic Kit (CABM00020). Exposure time: 1s.