

Smad6 Rabbit Polyclonal Antibody



CAB14749

Product Information

Size:

20uL, 50uL, 100uL, 200uL

Observed MW:

53kDa

Calculated MW:

26kDa/35kDa/53kDa

Applications:

WB IHC IF

Reactivity:

Human, Mouse, Rat

Protein Background

The protein encoded by this gene belongs to the SMAD family of proteins, which are related to Drosophila 'mothers against decapentaplegic' (Mad) and C. elegans Sma. SMAD proteins are signal transducers and transcriptional modulators that mediate multiple signaling pathways. This protein functions in the negative regulation of BMP and TGF-beta/activin-signalling. Multiple transcript variants have been found for this gene.

Immunogen information

Gene ID:

4091

Uniprot

O43541

Synonyms:

SMAD6; AOVD2; HsT17432; MADH6; MADH7

Antibody Information

Recommended dilutions:

WB 1:500 - 1:2000 IHC 1:50
- 1:200 IF 1:50 - 1:200

Source:

Rabbit

Isotype:

IgG

Purification:

Affinity purification

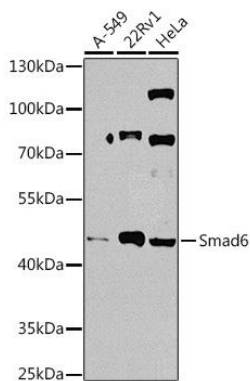
Immunogen:

Recombinant fusion protein containing a sequence corresponding to amino acids 257-496 of human Smad6 (NP_005576.3).

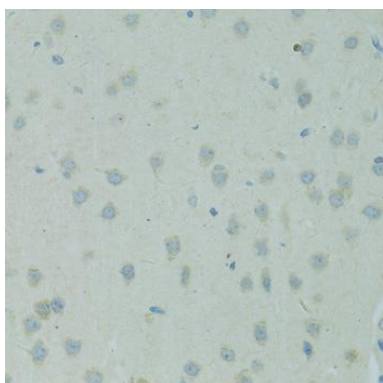
Storage:

Store at -20°C. Avoid freeze / thaw cycles. Buffer: PBS with 0.02% sodium azide, 50% glycerol, pH7.3.

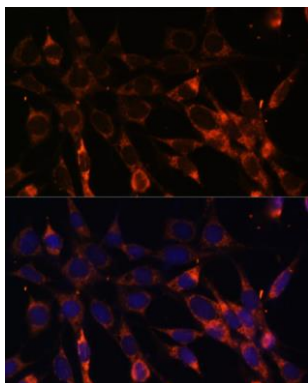
Product Images



Western blot analysis of extracts of various cell lines, using Smad6 antibody (CAB14749) at 1:1000 dilution. Secondary antibody: HRP Goat Anti-Rabbit IgG (H+L) (CABS014) at 1:10000 dilution. Lysates/proteins: 25ug per lane. Blocking buffer: 3% nonfat dry milk in TBST. Detection: ECL Basic Kit (CABM00020). Exposure time: 15s.



Immunohistochemistry of paraffin-embedded rat brain using Smad6 antibody (CAB14749) at dilution of 1:100 (40x lens).



Immunofluorescence analysis of NIH-3T3 cells using Smad6 antibody (CAB14749) at dilution of 1:100. Blue: DAPI for nuclear staining.