

ALDH6A1 Rabbit Polyclonal Antibody



CAB14750

Product Information

Size:

20uL, 50uL, 100uL, 200uL

Observed MW:

Calculated MW:

56kDa/57kDa

Applications:

IHC IF

Reactivity:

Human, Mouse, Rat

Antibody Information

Recommended dilutions:

IHC 1:50 - 1:200 IF 1:50 - 1:200

Source:

Rabbit

Isotype:

IgG

Purification:

Affinity purification

Protein Background

This gene encodes a member of the aldehyde dehydrogenase protein family. The encoded protein is a mitochondrial methylmalonate semialdehyde dehydrogenase that plays a role in the valine and pyrimidine catabolic pathways. This protein catalyzes the irreversible oxidative decarboxylation of malonate and methylmalonate semialdehydes to acetyl- and propionyl-CoA. Methylmalonate semialdehyde dehydrogenase deficiency is characterized by elevated beta-alanine, 3-hydroxypropionic acid, and both isomers of 3-amino and 3-hydroxyisobutyric acids in urine organic acids. Alternate splicing results in multiple transcript variants.

Immunogen information

Gene ID:

4329

Uniprot

Q02252

Synonyms:

ALDH6A1; MMSADHA; MMSDH

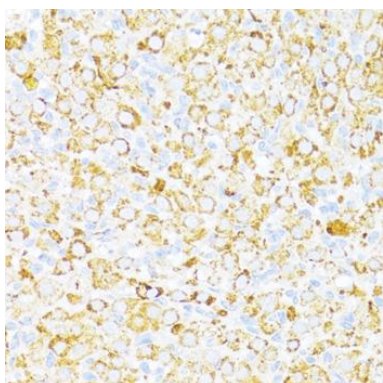
Immunogen:

Recombinant fusion protein containing a sequence corresponding to amino acids 326-535 of human ALDH6A1 (NP_005580.1).

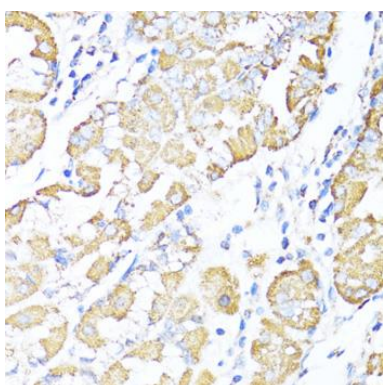
Storage:

Store at -20°C. Avoid freeze / thaw cycles. Buffer: PBS with 0.02% sodium azide, 50% glycerol, pH7.3.

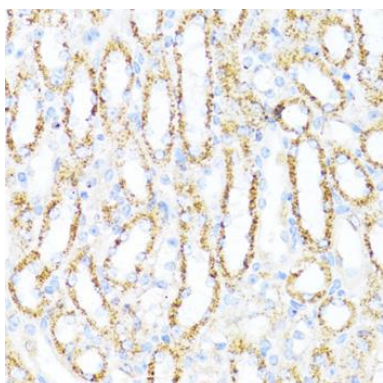
Product Images



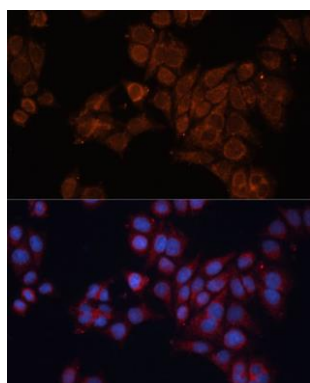
Immunohistochemistry of paraffin-embedded rat ovary using ALDH6A1 antibody (CAB14750) at dilution of 1:100 (40x lens).



Immunohistochemistry of paraffin-embedded human stomach using ALDH6A1 antibody (CAB14750) at dilution of 1:100 (40x lens).



Immunohistochemistry of paraffin-embedded mouse kidney using ALDH6A1 antibody (CAB14750) at dilution of 1:100 (40x lens).



Immunofluorescence analysis of HeLa cells using ALDH6A1 Polyclonal Antibody (CAB14750) at dilution of 1:100 (40x lens). Blue: DAPI for nuclear staining.