

[KO Validated] NDUFA5 Rabbit Polyclonal Antibody

CAB14751



Product Information

Size:

20uL, 50uL, 100uL, 200uL

Observed MW:

13kDa

Calculated MW:

13kDa

Applications:

WB IHC IF

Reactivity:

Human, Mouse, Rat

Protein Background

This nuclear gene encodes a conserved protein that comprises the B13 subunit of complex I of the mitochondrial respiratory chain. The encoded protein localizes to the inner mitochondrial membrane, where it is thought to aid in the transfer of electrons from NADH to ubiquinone. Alternative splicing results in multiple transcript variants. There are numerous pseudogenes of this gene on chromosomes 1, 3, 6, 8, 9, 11, 12, and 16.

Immunogen information

Gene ID:

4698

Uniprot

Q16718

Synonyms:

NDUFA5; B13; CI-13KD-B; CI-13kB; NUFM; UQOR13

Antibody Information

Recommended dilutions:

WB 1:500 - 1:2000 IHC 1:50
- 1:100 IF 1:50 - 1:100

Source:

Rabbit

Isotype:

IgG

Purification:

Affinity purification

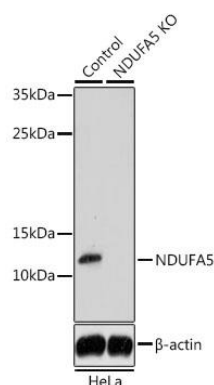
Immunogen:

Recombinant fusion protein containing a sequence corresponding to amino acids 1-116 of human NDUFA5 (NP_004991.1).

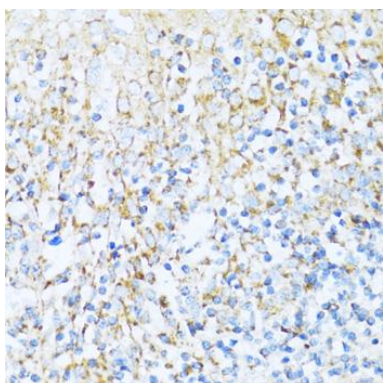
Storage:

Store at -20°C. Avoid freeze / thaw cycles. Buffer: PBS with 0.02% sodium azide, 50% glycerol, pH7.3.

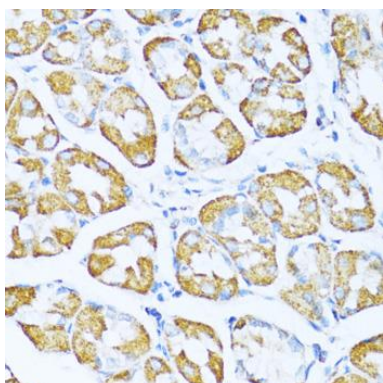
Product Images



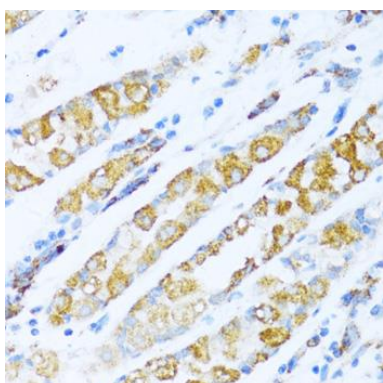
Western blot analysis of extracts from normal (control) and NDUFA5 knockout (KO) HeLa cells, using NDUFA5 antibody (CAB14751) at 1:1000 dilution. Secondary antibody: HRP Goat Anti-Rabbit IgG (H+L) (CABS014) at 1:10000 dilution. Lysates/proteins: 25ug per lane. Blocking buffer: 3% nonfat dry milk in TBST. Detection: ECL Basic Kit (CABM00020). Exposure time: 15s.



Immunohistochemistry of paraffin-embedded human tonsil using NDUFA5 antibody (CAB14751) at dilution of 1:100 (40x lens).



Immunohistochemistry of paraffin-embedded human stomach using NDUFA5 antibody (CAB14751) at dilution of 1:100 (40x lens).



Immunohistochemistry of paraffin-embedded human gastric cancer using NDUFA5 antibody (CAB14751) at dilution of 1:100 (40x lens).