

NFE2L1 Rabbit Polyclonal Antibody



CAB14753

Product Information

Size:

20uL, 50uL, 100uL, 200uL

Observed MW:

64kDa

Calculated MW:

81kDa/84kDa

Applications:

WB IHC IF

Reactivity:

Human, Mouse, Rat

Protein Background

This gene encodes a protein that is involved in globin gene expression in erythrocytes. Confusion has occurred in bibliographic databases due to the shared symbol of NRF1 for this gene, NFE2L1, and for 'nuclear respiratory factor 1' which has an official symbol of NRF1.

Immunogen information

Gene ID:

4779

Uniprot

Q14494

Synonyms:

NFE2L1; LCR-F1; NRF1; TCF11

Antibody Information

Recommended dilutions:

WB 1:500 - 1:2000 IHC 1:50
- 1:200 IF 1:50 - 1:200

Source:

Rabbit

Isotype:

IgG

Purification:

Affinity purification

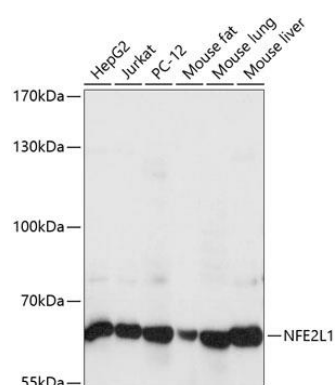
Immunogen:

Recombinant fusion protein containing a sequence corresponding to amino acids 515-772 of human NFE2L1 (NP_003195.1).

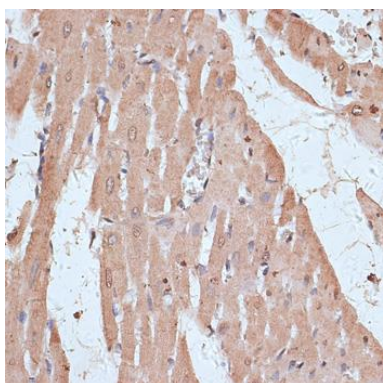
Storage:

Store at -20°C. Avoid freeze / thaw cycles. Buffer: PBS with 0.02% sodium azide, 50% glycerol, pH7.3.

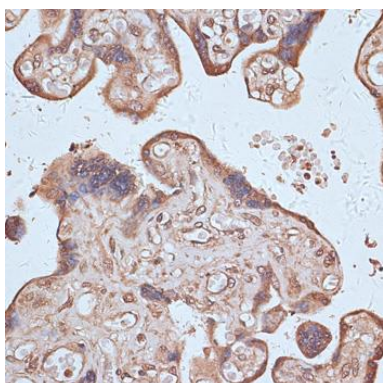
Product Images



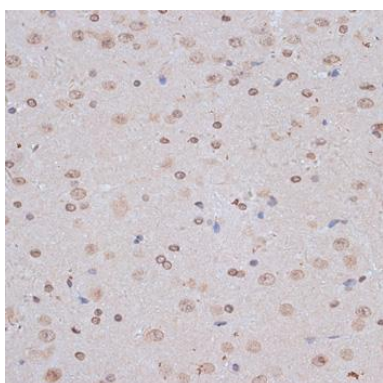
Western blot analysis of extracts of various cell lines, using NFE2L1 antibody (CAB14753) at 1:1000 dilution. Secondary antibody: HRP Goat Anti-Rabbit IgG (H+L) (CABS014) at 1:10000 dilution. Lysates/proteins: 25ug per lane. Blocking buffer: 3% nonfat dry milk in TBST. Detection: ECL Basic Kit (CABM00020). Exposure time: 1s.



Immunohistochemistry of paraffin-embedded rat heart using NFE2L1 antibody (CAB14753) at dilution of 1:100 (40x lens).



Immunohistochemistry of paraffin-embedded human placenta using NFE2L1 antibody (CAB14753) at dilution of 1:100 (40x lens).



Immunohistochemistry of paraffin-embedded mouse brain using NFE2L1 antibody (CAB14753) at dilution of 1:100 (40x lens).