

SERPINE1 Rabbit Polyclonal Antibody



CAB14758

Product Information

Size:

20uL, 50uL, 100uL, 200uL

Observed MW:

Calculated MW:

43kDa/45kDa

Applications:

IHC IF

Reactivity:

Human

Antibody Information

Recommended dilutions:

IHC 1:50 - 1:200 IF 1:50 - 1:200

Source:

Rabbit

Isotype:

IgG

Purification:

Affinity purification

Protein Background

This gene encodes a member of the serine proteinase inhibitor (serpin) superfamily. This member is the principal inhibitor of tissue plasminogen activator (tPA) and urokinase (uPA), and hence is an inhibitor of fibrinolysis. Defects in this gene are the cause of plasminogen activator inhibitor-1 deficiency (PAI-1 deficiency), and high concentrations of the gene product are associated with thrombophilia. Alternatively spliced transcript variants encoding different isoforms have been found for this gene.

Immunogen information

Gene ID:

5054

Uniprot

P05121

Synonyms:

PAI; PAI-1; PAI1; PLANH1; SERPINE1

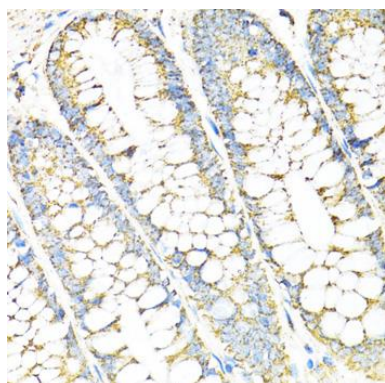
Immunogen:

Recombinant fusion protein containing a sequence corresponding to amino acids 24-158 of human SERPINE1 (NP_000593.1).

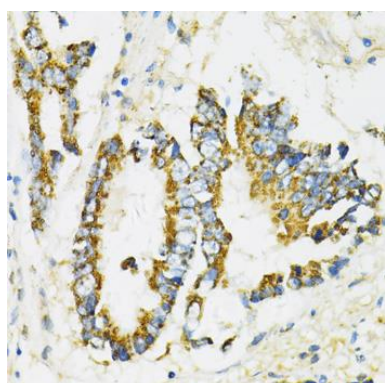
Storage:

Store at -20°C. Avoid freeze / thaw cycles. Buffer: PBS with 0.02% sodium azide, 50% glycerol, pH7.3.

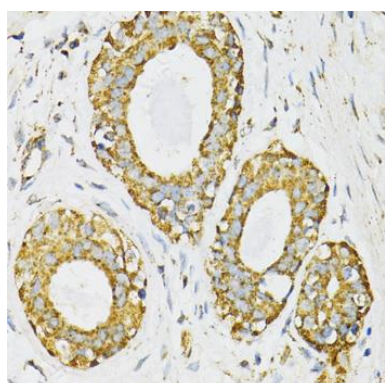
Product Images



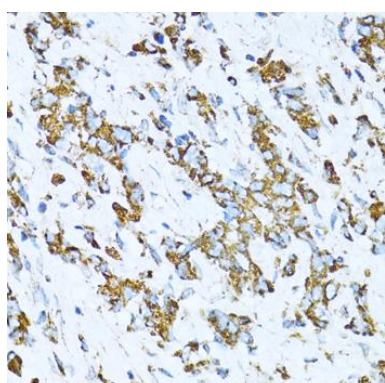
Immunohistochemistry of paraffin-embedded human colon using SERPINE1 antibody (CAB14758) at dilution of 1:100 (40x lens).



Immunohistochemistry of paraffin-embedded human colon carcinoma using SERPINE1 antibody (CAB14758) at dilution of 1:100 (40x lens).



Immunohistochemistry of paraffin-embedded human breast cancer using SERPINE1 antibody (CAB14758) at dilution of 1:100 (40x lens).



Immunohistochemistry of paraffin-embedded human gastric cancer using SERPINE1 antibody (CAB14758) at dilution of 1:100 (40x lens).