

PTPRN2 Rabbit Polyclonal Antibody



CAB14774

Product Information

Size:

20uL, 50uL, 100uL, 200uL

Observed MW:

111kDa

Calculated MW:

108kDa/109kDa/111kDa/114 kDa

Applications:

WB IHC IF

Reactivity:

Human, Mouse, Rat

Protein Background

This gene encodes a protein with sequence similarity to receptor-like protein tyrosine phosphatases. However, tyrosine phosphatase activity has not been experimentally validated for this protein. Studies of the rat ortholog suggest that the encoded protein may instead function as a phosphatidylinositol phosphatase with the ability to dephosphorylate phosphatidylinositol 3-phosphate and phosphatidylinositol 4, 5-diphosphate, and this function may be involved in the regulation of insulin secretion. This protein has been identified as an autoantigen in insulin-dependent diabetes mellitus. Alternative splicing results in multiple transcript variants.

Immunogen information

Gene ID:

5799

Uniprot

Q92932

Synonyms:

PTPRN2; IA-2beta; IAR; ICAAR; PTPRP; R-PTP-N2

Antibody Information

Recommended dilutions:

WB 1:500 - 1:2000 IHC 1:50
- 1:100 IF 1:50 - 1:100

Source:

Rabbit

Isotype:

IgG

Purification:

Affinity purification

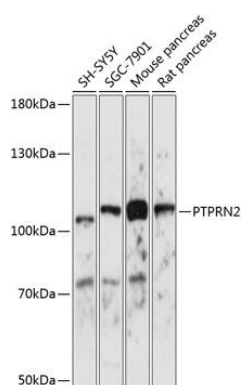
Immunogen:

Recombinant fusion protein containing a sequence corresponding to amino acids 22-242 of human PTPRN2 (NP_570858.2).

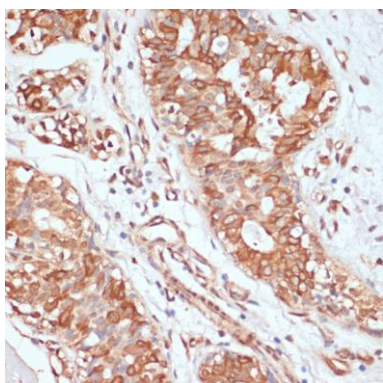
Storage:

Store at -20°C. Avoid freeze / thaw cycles. Buffer: PBS with 0.02% sodium azide, 50% glycerol, pH7.3.

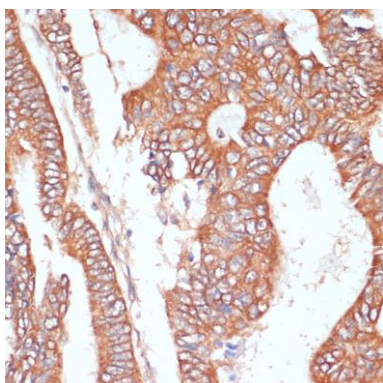
Product Images



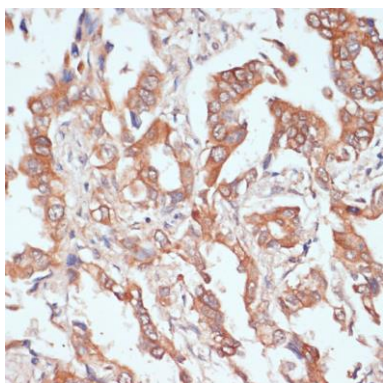
Western blot analysis of extracts of various cell lines, using PTPRN2 antibody (CAB14774) at 1:1000 dilution. Secondary antibody: HRP Goat Anti-Rabbit IgG (H+L) (CABS014) at 1:10000 dilution. Lysates/proteins: 25ug per lane. Blocking buffer: 3% nonfat dry milk in TBST. Detection: ECL Basic Kit (CABM00020). Exposure time: 5s.



Immunohistochemistry of paraffin-embedded human mammary cancer using PTPRN2 antibody (CAB14774) at dilution of 1:100 (40x lens).



Immunohistochemistry of paraffin-embedded human colon carcinoma using PTPRN2 antibody (CAB14774) at dilution of 1:100 (40x lens).



Immunohistochemistry of paraffin-embedded human lung cancer using PTPRN2 antibody (CAB14774) at dilution of 1:100 (40x lens).