

# RB Rabbit Polyclonal Antibody



CAB14775

## Product Information

### Size:

20uL, 50uL, 100uL, 200uL

### Observed MW:

### Calculated MW:

106kDa

### Applications:

IHC

### Reactivity:

Human, Mouse

## Antibody Information

### Recommended dilutions:

IHC 1:50 - 1:200

### Source:

Rabbit

### Isotype:

IgG

### Purification:

Affinity purification

## Protein Background

The protein encoded by this gene is a negative regulator of the cell cycle and was the first tumor suppressor gene found. The encoded protein also stabilizes constitutive heterochromatin to maintain the overall chromatin structure. The active, hypophosphorylated form of the protein binds transcription factor E2F1. Defects in this gene are a cause of childhood cancer retinoblastoma (RB), bladder cancer, and osteogenic sarcoma.

## Immunogen information

### Gene ID:

5925

### Uniprot

P06400

### Synonyms:

OSRC; PPP1R130; RB; p105-Rb; pRb; pp110; RB1; Rb

### Immunogen:

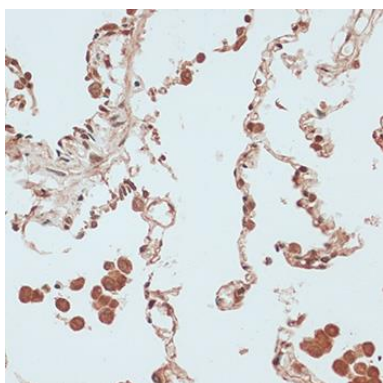
Recombinant fusion protein containing a sequence corresponding to amino acids 649-928 of human RB (NP\_000312.2).

### Storage:

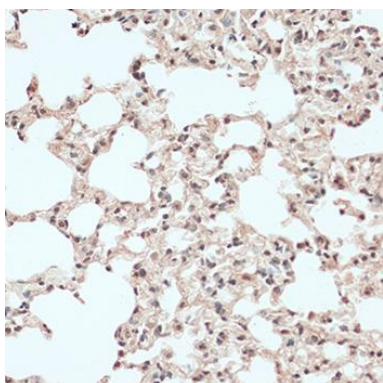
Store at -20°C. Avoid freeze / thaw cycles. Buffer: PBS with 0.02% sodium azide, 50% glycerol, pH7.3.

## Product Images

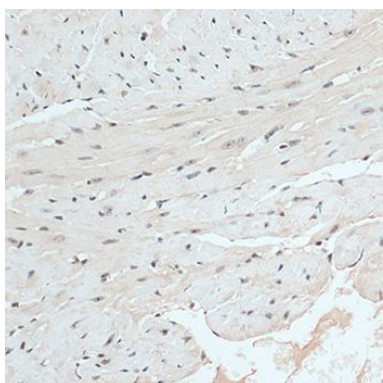
---



Immunohistochemistry of paraffin-embedded human lung using RB1 antibody (CAB14775) at dilution of 1:100 (40x lens).



Immunohistochemistry of paraffin-embedded mouse lung using RB1 antibody (CAB14775) at dilution of 1:100 (40x lens).



Immunohistochemistry of paraffin-embedded mouse heart using RB1 antibody (CAB14775) at dilution of 1:100 (40x lens).