

RBBP6 Rabbit Polyclonal Antibody



CAB14776

Product Information

Size:

20uL, 50uL, 100uL, 200uL

Observed MW:

210kDa

Calculated MW:

13kDa/106kDa/197kDa/201kDa

Applications:

WB

Reactivity:

Human

Protein Background

The retinoblastoma tumor suppressor (pRB) protein binds with many other proteins. In various human cancers, pRB suppresses cellular proliferation and is inactivated. Cell cycle-dependent phosphorylation regulates the activity of pRB. This gene encodes a protein which binds to underphosphorylated but not phosphorylated pRB. Multiple alternatively spliced transcript variants that encode different isoforms have been found for this gene.

Immunogen information

Gene ID:

5930

Uniprot

Q7Z6E9

Synonyms:

RBBP6; MY038; P2P-R; PACT; RBQ-1; SNAMA

Antibody Information

Recommended dilutions:

WB 1:500 - 1:2000

Source:

Rabbit

Isotype:

IgG

Purification:

Affinity purification

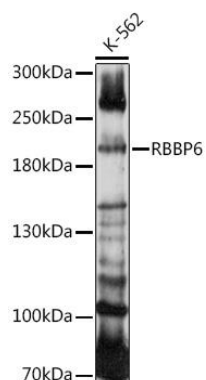
Immunogen:

Recombinant fusion protein containing a sequence corresponding to amino acids 1-118 of human RBBP6 (NP_116015.2).

Storage:

Store at -20°C. Avoid freeze / thaw cycles. Buffer: PBS with 0.02% sodium azide, 50% glycerol, pH7.3.

Product Images



Western blot analysis of extracts of K-562 cells, using RBBP6 antibody (CAB14776) at 1:1000 dilution. Secondary antibody: HRP Goat Anti-Rabbit IgG (H+L) (CABS014) at 1:10000 dilution. Lysates/proteins: 25ug per lane. Blocking buffer: 3% nonfat dry milk in TBST. Detection: ECL Enhanced Kit (CABM00021). Exposure time: 90s.