

NR1D1 Rabbit Polyclonal Antibody



CAB1478

Product Information

Size:

50uL, 100uL

Observed MW:

67kDa

Calculated MW:

66kDa

Applications:

WB IP

Reactivity:

Human, Mouse

Protein Background

This gene encodes a transcription factor that is a member of the nuclear receptor subfamily 1. The encoded protein is a ligand-sensitive transcription factor that negatively regulates the expression of core clock proteins. In particular this protein represses the circadian clock transcription factor aryl hydrocarbon receptor nuclear translocator-like protein 1 (ARNTL). This protein may also be involved in regulating genes that function in metabolic, inflammatory and cardiovascular processes.

Immunogen information

Gene ID:

9572

Uniprot

P20393

Synonyms:

NR1D1; EAR1; THRA1; THRAL; ear-1; Rev-erbAlpha

Antibody Information

Recommended dilutions:

WB 1:500 - 1:2000 IP 1:20 - 1:50

Source:

Rabbit

Isotype:

IgG

Purification:

Affinity purification

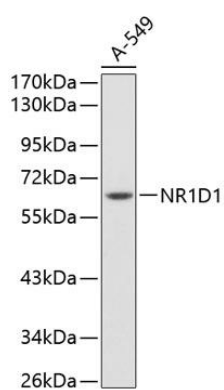
Immunogen:

Recombinant protein of human NR1D1

Storage:

Store at -20°C. Avoid freeze / thaw cycles. Buffer: PBS with 0.02% sodium azide, 50% glycerol, pH7.3.

Product Images



Western blot analysis of extracts of A-549 cells, using NR1D1 antibody (CAB1478). Secondary antibody: HRP Goat Anti-Rabbit IgG (H+L) (CABS014) at 1:10000 dilution. Lysates/proteins: 25ug per lane. Blocking buffer: 3% nonfat dry milk in TBST.