

S100P Rabbit Polyclonal Antibody



CAB14780

Product Information

Size:

20uL, 50uL, 100uL, 200uL

Observed MW:

10KDa

Calculated MW:

10kDa

Applications:

WB IHC IF IP

Reactivity:

Human, Mouse, Rat

Antibody Information

Recommended dilutions:

WB 1:500 - 1:2000 IHC

1:100 - 1:200 IF 1:50 -

1:200 IP 1:50 - 1:200

Source:

Rabbit

Isotype:

IgG

Purification:

Affinity purification

Protein Background

The protein encoded by this gene is a member of the S100 family of proteins containing 2 EF-hand calcium-binding motifs. S100 proteins are localized in the cytoplasm and/or nucleus of a wide range of cells, and involved in the regulation of a number of cellular processes such as cell cycle progression and differentiation. S100 genes include at least 13 members which are located as a cluster on chromosome 1q21; however, this gene is located at 4p16. This protein, in addition to binding Ca²⁺, also binds Zn²⁺ and Mg²⁺. This protein may play a role in the etiology of prostate cancer.

Immunogen information

Gene ID:

6286

Uniprot

P25815

Synonyms:

S100P; MIG9

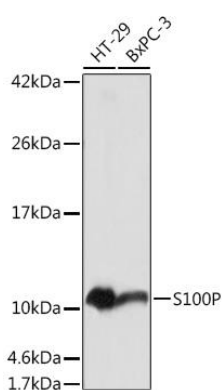
Immunogen:

A synthetic peptide corresponding to a sequence within amino acids 1-95 of human S100P (NP_005971.1).

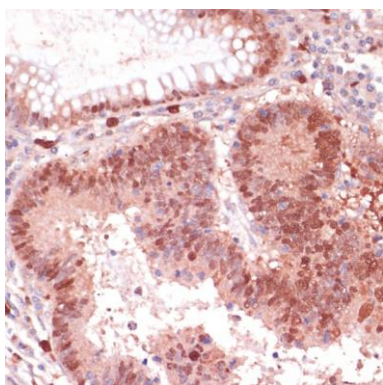
Storage:

Store at -20°C. Avoid freeze / thaw cycles. Buffer: PBS with 0.02% sodium azide, 50% glycerol, pH7.3.

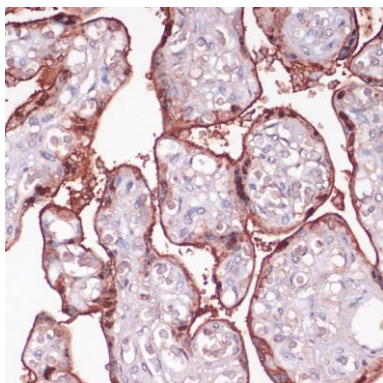
Product Images



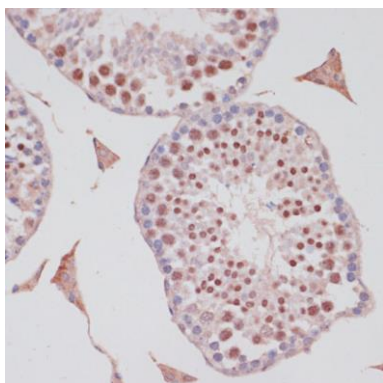
Western blot analysis of extracts of various cell lines, using S100P antibody (CAB14780) at 1:1000 dilution. Secondary antibody: HRP Goat Anti-Rabbit IgG (H+L) (CABS014) at 1:10000 dilution. Lysates/proteins: 25ug per lane. Blocking buffer: 3% nonfat dry milk in TBST. Detection: ECL Basic Kit (CABM00020). Exposure time: 5s.



Immunohistochemistry of paraffin-embedded human colon carcinoma using S100P antibody (CAB14780) at dilution of 1:100 (40x lens).



Immunohistochemistry of paraffin-embedded human placenta using S100P antibody (CAB14780) at dilution of 1:100 (40x lens).



Immunohistochemistry of paraffin-embedded mouse testis using S100P antibody (CAB14780) at dilution of 1:100 (40x lens).