

# TAL2 Rabbit Polyclonal Antibody



CAB14788

---

## Product Information

**Size:**

20uL, 50uL, 100uL, 200uL

**Observed MW:**

12kDa

**Calculated MW:**

12kDa

**Applications:**

WB

**Reactivity:**

Rat

## Protein Background

This intronless gene encodes a helix-loop-helix protein. Translocations between this gene on chromosome 9 and the T-cell receptor beta-chain locus on chromosome 7 have been associated with activation of the T-cell acute lymphocytic leukemia 2 gene and T-cell acute lymphoblastic leukemia.

## Immunogen information

**Gene ID:**

6887

**Uniprot**

Q16559

**Synonyms:**

TAL2

## Antibody Information

**Recommended dilutions:**

WB 1:500 - 1:2000

**Source:**

Rabbit

**Isotype:**

IgG

**Purification:**

Affinity purification

**Immunogen:**

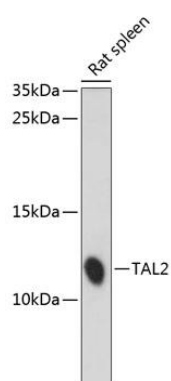
A synthetic peptide corresponding to a sequence within amino acids 20 to the C-terminus of human TAL2 (NP\_005412.1).

**Storage:**

Store at -20°C. Avoid freeze / thaw cycles. Buffer: PBS with 0.02% sodium azide, 50% glycerol, pH7.3.

## Product Images

---



Western blot analysis of extracts of rat spleen, using TAL2 antibody (CAB14788) at 1:1000 dilution. Secondary antibody: HRP Goat Anti-Rabbit IgG (H+L) (CABS014) at 1:10000 dilution. Lysates/proteins: 25ug per lane. Blocking buffer: 3% nonfat dry milk in TBST. Detection: ECL Enhanced Kit (CABM00021). Exposure time: 10s.