

# TYROBP Rabbit Polyclonal Antibody



CAB14794

## Product Information

### Size:

20uL, 50uL, 100uL, 200uL

### Observed MW:

12kDa

### Calculated MW:

11kDa/12kDa

### Applications:

WB

### Reactivity:

Mouse, Rat

## Antibody Information

### Recommended dilutions:

WB 1:500 - 1:2000

### Source:

Rabbit

### Isotype:

IgG

### Purification:

Affinity purification

## Protein Background

This gene encodes a transmembrane signaling polypeptide which contains an immunoreceptor tyrosine-based activation motif (ITAM) in its cytoplasmic domain. The encoded protein may associate with the killer-cell inhibitory receptor (KIR) family of membrane glycoproteins and may act as an activating signal transduction element. This protein may bind zeta-chain (TCR) associated protein kinase 70kDa (ZAP-70) and spleen tyrosine kinase (SYK) and play a role in signal transduction, bone modeling, brain myelination, and inflammation. Mutations within this gene have been associated with polycystic lipomembranous osteodysplasia with sclerosing leukoencephalopathy (PLOSL), also known as Nasu-Hakola disease. Its putative receptor, triggering receptor expressed on myeloid cells 2 (TREM2), also causes PLOSL. Multiple alternative transcript variants encoding distinct isoforms have been identified for this gene.

## Immunogen information

### Gene ID:

7305

### Uniprot

O43914

### Synonyms:

TYROBP; DAP12; KARAP; PLOSL

### Immunogen:

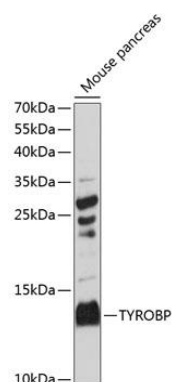
A synthetic peptide corresponding to a sequence within amino acids 50 to the C-terminus of human TYROBP (NP\_003323.1).

### Storage:

Store at -20°C. Avoid freeze / thaw cycles. Buffer: PBS with 0.02% sodium azide, 50% glycerol, pH7.3.

## Product Images

---



Western blot analysis of extracts of mouse pancreas, using TYROBP antibody (CAB14794) at 1:3000 dilution. Secondary antibody: HRP Goat Anti-Rabbit IgG (H+L) (CABS014) at 1:10000 dilution. Lysates/proteins: 25ug per lane. Blocking buffer: 3% nonfat dry milk in TBST. Detection: ECL Basic Kit (CABM00020). Exposure time: 90s.