

# ZNF141 Rabbit Polyclonal Antibody



CAB14799

---

## Product Information

### Size:

20uL, 50uL, 100uL, 200uL

### Observed MW:

### Calculated MW:

55kDa

### Applications:

IHC IF

### Reactivity:

Human, Mouse, Rat

## Antibody Information

### Recommended dilutions:

IHC 1:50 - 1:200 IF 1:50 - 1:200

### Source:

Rabbit

### Isotype:

IgG

### Purification:

Affinity purification

## Protein Background

### Immunogen information

#### Gene ID:

7700

#### Uniprot

Q15928

#### Synonyms:

ZNF141; D4S90; pHZ-44; PAPA6

#### Immunogen:

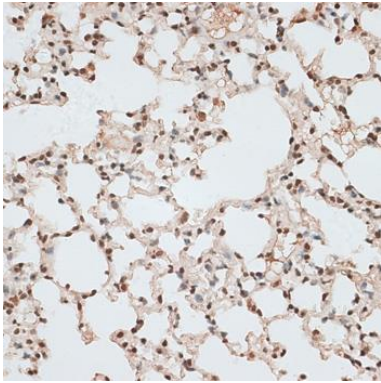
Recombinant fusion protein containing a sequence corresponding to amino acids 405-474 of human ZNF141 (NP\_003432.1).

#### Storage:

Store at -20°C. Avoid freeze / thaw cycles. Buffer: PBS with 0.02% sodium azide, 50% glycerol, pH7.3.

## Product Images

---



Immunohistochemistry of paraffin-embedded mouse lung using ZNF141 antibody (CAB14799) at dilution of 1:100 (40x lens).