

# ZNF177 Rabbit Polyclonal Antibody



CAB14802

---

## Product Information

### Size:

20uL, 50uL, 100uL, 200uL

### Observed MW:

### Calculated MW:

13kDa/36kDa/54kDa

### Applications:

IHC IF

### Reactivity:

Human, Mouse, Rat

## Antibody Information

### Recommended dilutions:

IHC 1:50 - 1:200 IF 1:50 - 1:200

### Source:

Rabbit

### Isotype:

IgG

### Purification:

Affinity purification

## Protein Background

### Immunogen information

#### Gene ID:

7730

#### Uniprot

Q13360

#### Synonyms:

ZNF177; PIGX

#### Immunogen:

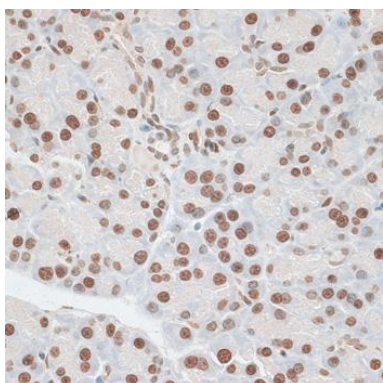
Recombinant fusion protein containing a sequence corresponding to amino acids 50-110 of human ZNF177 (NP\_003442.2).

#### Storage:

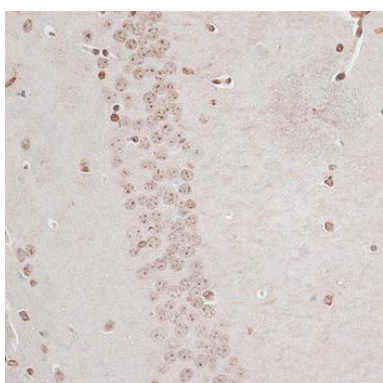
Store at -20°C. Avoid freeze / thaw cycles. Buffer: PBS with 0.02% sodium azide, 50% glycerol, pH7.3.

## Product Images

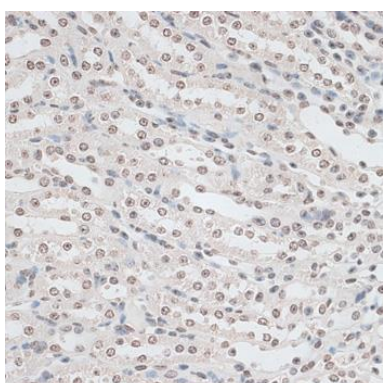
---



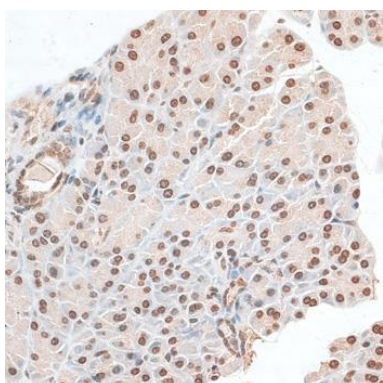
Immunohistochemistry of paraffin-embedded rat pancreas using ZNF177 antibody (CAB14802) at dilution of 1:100 (40x lens).



Immunohistochemistry of paraffin-embedded mouse brain using ZNF177 antibody (CAB14802) at dilution of 1:100 (40x lens).



Immunohistochemistry of paraffin-embedded mouse kidney using ZNF177 antibody (CAB14802) at dilution of 1:100 (40x lens).



Immunohistochemistry of paraffin-embedded mouse pancreas using ZNF177 antibody (CAB14802) at dilution of 1:100 (40x lens).