

# KLRC4 Rabbit Polyclonal Antibody



CAB14807

## Product Information

### Size:

20uL, 50uL, 100uL, 200uL

### Observed MW:

14kDa

### Calculated MW:

18kDa

### Applications:

WB IF

### Reactivity:

Human, Mouse, Rat

## Antibody Information

### Recommended dilutions:

WB 1:500 - 1:2000 IF 1:50 - 1:100

### Source:

Rabbit

### Isotype:

IgG

### Purification:

Affinity purification

## Protein Background

Natural killer (NK) cells are lymphocytes that can mediate lysis of certain tumor cells and virus-infected cells without previous activation. They can also regulate specific humoral and cell-mediated immunity. NK cells preferentially express several calcium-dependent (C-type) lectins, which have been implicated in the regulation of NK cell function. This gene is a member of the NKG2 group of genes that are expressed primarily in natural killer (NK) cells. These family members encode transmembrane proteins that are characterized by a type II membrane orientation (have an extracellular C-terminus) and the presence of a C-type lectin domain. This family member is located within the NK complex, a region that contains several C-type lectin genes preferentially expressed in NK cells. Read-through transcription exists between this gene and the downstream KLRK1 (killer cell lectin-like receptor subfamily K, member 1) family member.

## Immunogen information

### Gene ID:

8302

### Uniprot

O43908

### Synonyms:

KLRC4; NKG2-F; NKG2F

### Immunogen:

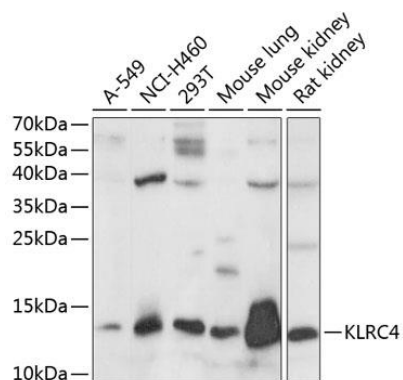
Recombinant fusion protein containing a sequence corresponding to amino acids 1-55 of human KLRC4 (NP\_038459.1).

### Storage:

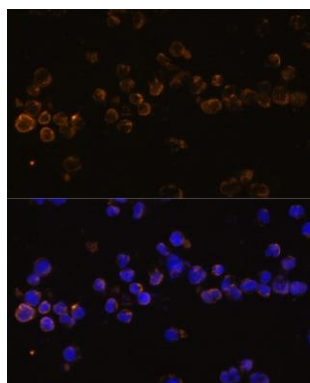
Store at -20°C. Avoid freeze / thaw cycles. Buffer: PBS with 0.02% sodium azide, 50% glycerol, pH7.3.

## Product Images

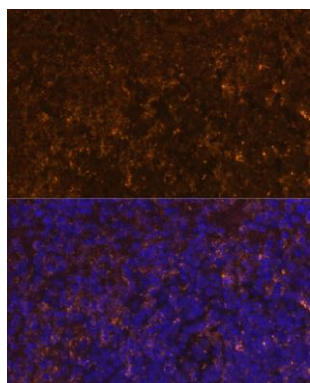
---



Western blot analysis of extracts of various cell lines, using KLRC4 antibody (CAB14807) at 1:1000 dilution. Secondary antibody: HRP Goat Anti-Rabbit IgG (H+L) (CABS014) at 1:10000 dilution. Lysates/proteins: 25ug per lane. Blocking buffer: 3% nonfat dry milk in TBST. Detection: ECL Basic Kit (CABM00020). Exposure time: 30s.



Immunofluorescence analysis of Jurkat cells using KLRC4 Polyclonal Antibody (CAB14807) at dilution of 1:100 (40x lens). Blue: DAPI for nuclear staining.



Immunofluorescence analysis of mouse spleen using KLRC4 Polyclonal Antibody (CAB14807) at dilution of 1:100 (40x lens). Blue: DAPI for nuclear staining.