

PRPF4B Rabbit Polyclonal Antibody



CAB14815

Product Information

Size:

20uL, 50uL, 100uL, 200uL

Observed MW:

160kDa

Calculated MW:

116kDa

Applications:

WB

Reactivity:

Human, Mouse, Rat

Protein Background

Pre-mRNA splicing occurs in two sequential transesterification steps, and the protein encoded by this gene is thought to be involved in pre-mRNA splicing and in signal transduction. This protein belongs to a kinase family that includes serine/arginine-rich protein-specific kinases and cyclin-dependent kinases (CDKs). This protein is regarded as a CDK-like kinase (Clk) with homology to mitogen-activated protein kinases (MAPKs).

Immunogen information

Gene ID:

8899

Uniprot

Q13523

Synonyms:

PRPF4B; PR4H; PRP4; PRP4H; PRP4K; dJ1013A10.1

Antibody Information

Recommended dilutions:

WB 1:500 - 1:2000

Source:

Rabbit

Isotype:

IgG

Purification:

Affinity purification

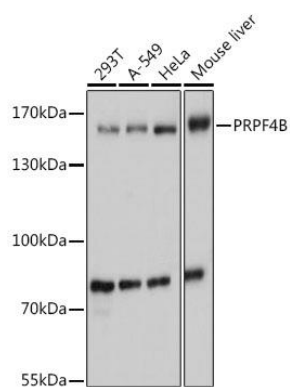
Immunogen:

Recombinant fusion protein containing a sequence corresponding to amino acids 550-760 of human PRPF4B (NP_003904.3).

Storage:

Store at -20°C. Avoid freeze / thaw cycles. Buffer: PBS with 0.02% sodium azide, 50% glycerol, pH7.3.

Product Images



Western blot analysis of extracts of various cell lines, using PRPF4B antibody (CAB14815) at 1:1000 dilution. Secondary antibody: HRP Goat Anti-Rabbit IgG (H+L) (CABS014) at 1:10000 dilution. Lysates/proteins: 25ug per lane. Blocking buffer: 3% nonfat dry milk in TBST. Detection: ECL Basic Kit (CABM00020). Exposure time: 1s.