

# SLC16A4 Rabbit Polyclonal Antibody



CAB14818

---

## Product Information

### Size:

20uL, 50uL, 100uL, 200uL

### Observed MW:

60kDa

### Calculated MW:

35kDa/42kDa/46kDa/49kDa/  
54kDa

### Applications:

WB IHC IF

### Reactivity:

Human, Rat

## Antibody Information

### Recommended dilutions:

WB 1:500 - 1:2000 IHC 1:50  
- 1:200 IF 1:50 - 1:200

### Source:

Rabbit

### Isotype:

IgG

### Purification:

Affinity purification

## Protein Background

### Immunogen information

#### Gene ID:

9122

#### Uniprot

O15374

#### Synonyms:

SLC16A4; MCT4; MCT5

#### Immunogen:

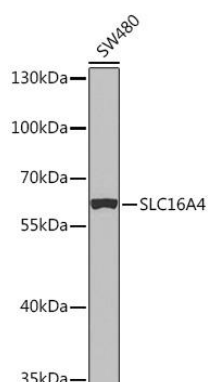
A synthetic peptide corresponding to a sequence within amino acids 250-350 of human SLC16A4 (NP\_004687.1).

#### Storage:

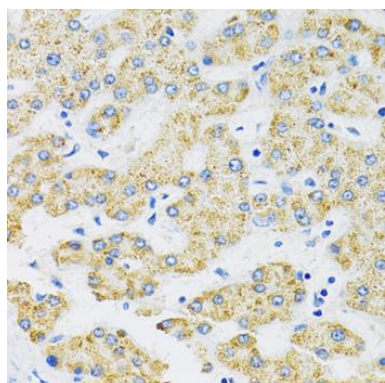
Store at -20°C. Avoid freeze / thaw cycles. Buffer: PBS with 0.02% sodium azide, 50% glycerol, pH7.3.

## Product Images

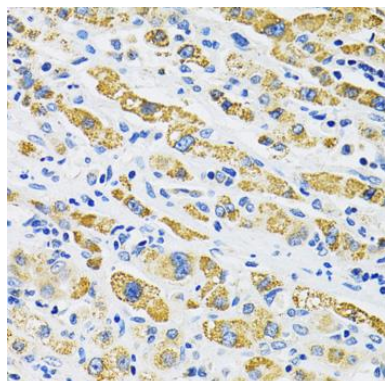
---



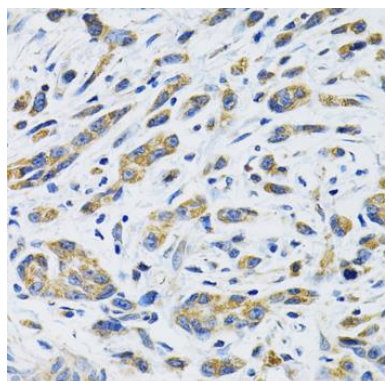
Western blot analysis of extracts of SW480 cells, using SLC16A4 Rabbit pAb (CAB14818) at 1:1000 dilution. Secondary antibody: HRP Goat Anti-Rabbit IgG (H+L) (CABS014) at 1:10000 dilution. Lysates/proteins: 25ug per lane. Blocking buffer: 3% nonfat dry milk in TBST. Detection: ECL Basic Kit (CABM00020). Exposure time: 90s.



Immunohistochemistry of paraffin-embedded human liver using SLC16A4 antibody (CAB14818) at dilution of 1:100 (40x lens).



Immunohistochemistry of paraffin-embedded human liver cancer using SLC16A4 antibody (CAB14818) at dilution of 1:100 (40x lens).



Immunohistochemistry of paraffin-embedded human gastric cancer using SLC16A4 antibody (CAB14818) at dilution of 1:100 (40x lens).