

DDX21 Rabbit Polyclonal Antibody



CAB14820

Product Information

Size:

20uL, 50uL, 100uL, 200uL

Observed MW:

Calculated MW:

79kDa/87kDa

Applications:

IHC IF

Reactivity:

Human, Mouse

Antibody Information

Recommended dilutions:

IHC 1:50 - 1:200 IF 1:50 - 1:200

Source:

Rabbit

Isotype:

IgG

Purification:

Affinity purification

Protein Background

DEAD box proteins, characterized by the conserved motif Asp-Glu-Ala-Asp (DEAD), are putative RNA helicases. They are implicated in a number of cellular processes involving alteration of RNA secondary structure such as translation initiation, nuclear and mitochondrial splicing, and ribosome and spliceosome assembly. Based on their distribution patterns, some members of this family are believed to be involved in embryogenesis, spermatogenesis, and cellular growth and division. This gene encodes a DEAD box protein, which is an antigen recognized by autoimmune antibodies from a patient with watermelon stomach disease. This protein unwinds double-stranded RNA, folds single-stranded RNA, and may play important roles in ribosomal RNA biogenesis, RNA editing, RNA transport, and general transcription.

Immunogen information

Gene ID:

9188

Uniprot

Q9NR30

Synonyms:

DDX21; GUA; GURDB; RH-II/GU; RH-II/GuA

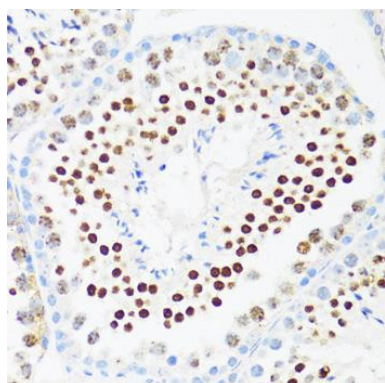
Immunogen:

Recombinant fusion protein containing a sequence corresponding to amino acids 1-180 of human DDX21 (NP_004719.2).

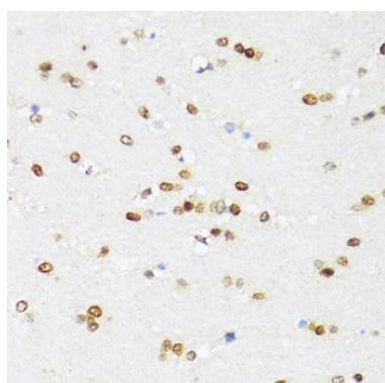
Storage:

Store at -20°C. Avoid freeze / thaw cycles. Buffer: PBS with 0.02% sodium azide, 50% glycerol, pH7.3.

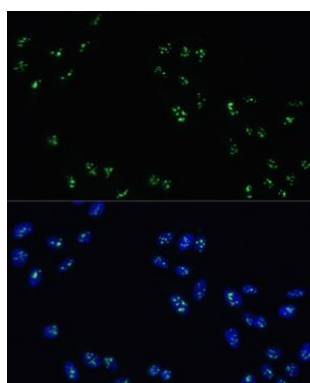
Product Images



Immunohistochemistry of paraffin-embedded mouse testis using DDX21 antibody (CAB14820) at dilution of 1:100 (40x lens).



Immunohistochemistry of paraffin-embedded mouse brain using DDX21 antibody (CAB14820) at dilution of 1:100 (40x lens).



Immunofluorescence analysis of U-2 OS cells using DDX21 antibody (CAB14820) at dilution of 1:100. Blue: DAPI for nuclear staining.