

# SLC4A8 Rabbit Polyclonal Antibody



CAB14825

## Product Information

### Size:

20uL, 50uL, 100uL, 200uL

### Observed MW:

123kDa

### Calculated MW:

71kDa/77kDa/83kDa/111kDa  
/117kDa/120kDa/122kDa

### Applications:

WB

### Reactivity:

Human, Mouse, Rat

## Protein Background

The protein encoded by this gene is a membrane protein that functions to transport sodium and bicarbonate ions across the cell membrane. The encoded protein is important for pH regulation in neurons. The activity of this protein can be inhibited by 4, 4'-Di-isothiocyanatostilbene-2, 2'-disulfonic acid (DIDS). Several transcript variants encoding different isoforms have been found for this gene.

## Immunogen information

### Gene ID:

9498

### Uniprot

Q2Y0W8

### Synonyms:

SLC4A8; NBC3; NDCBE

## Antibody Information

### Recommended dilutions:

WB 1:500 - 1:2000

### Source:

Rabbit

### Isotype:

IgG

### Purification:

Affinity purification

### Immunogen:

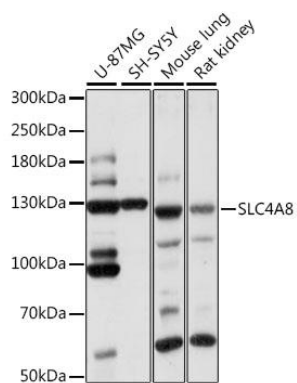
Recombinant fusion protein containing a sequence corresponding to amino acids 1-90 of human SLC4A8 (NP\_001035049.1).

### Storage:

Store at -20°C. Avoid freeze / thaw cycles. Buffer: PBS with 0.02% sodium azide, 50% glycerol, pH7.3.

## Product Images

---



Western blot analysis of extracts of various cell lines, using SLC4A8 antibody (CAB14825) at 1:1000 dilution. Secondary antibody: HRP Goat Anti-Rabbit IgG (H+L) (CABS014) at 1:10000 dilution. Lysates/proteins: 25ug per lane. Blocking buffer: 3% nonfat dry milk in TBST. Detection: ECL Basic Kit (CABM00020). Exposure time: 1s.