

BAG3 Rabbit Polyclonal Antibody



CAB14826

Product Information

Size:

20uL, 50uL, 100uL, 200uL

Observed MW:

80kDa

Calculated MW:

61kDa

Applications:

WB IHC IF IP

Reactivity:

Human, Mouse, Rat

Protein Background

BAG proteins compete with Hip for binding to the Hsc70/Hsp70 ATPase domain and promote substrate release. All the BAG proteins have an approximately 45-amino acid BAG domain near the C terminus but differ markedly in their N-terminal regions. The protein encoded by this gene contains a WW domain in the N-terminal region and a BAG domain in the C-terminal region. The BAG domains of BAG1, BAG2, and BAG3 interact specifically with the Hsc70 ATPase domain in vitro and in mammalian cells. All 3 proteins bind with high affinity to the ATPase domain of Hsc70 and inhibit its chaperone activity in a Hip-repressible manner.

Immunogen information

Gene ID:

9531

Uniprot

O95817

Synonyms:

BAG3; BAG-3; BIS; CAIR-1; MFM6

Antibody Information

Recommended dilutions:

WB 1:500 - 1:2000 IHC 1:50

- 1:100 IF 1:50 - 1:100 IP

1:50 - 1:100

Source:

Rabbit

Isotype:

IgG

Purification:

Affinity purification

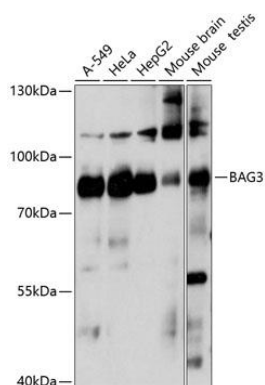
Immunogen:

Recombinant fusion protein containing a sequence corresponding to amino acids 380-575 of human BAG3 (NP_004272.2).

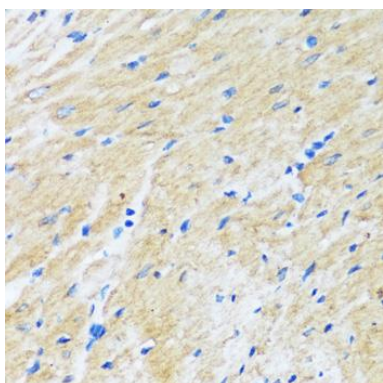
Storage:

Store at -20°C. Avoid freeze / thaw cycles. Buffer: PBS with 0.02% sodium azide, 50% glycerol, pH7.3.

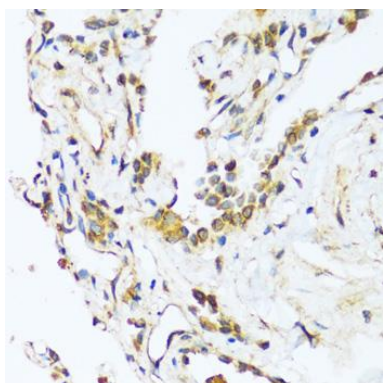
Product Images



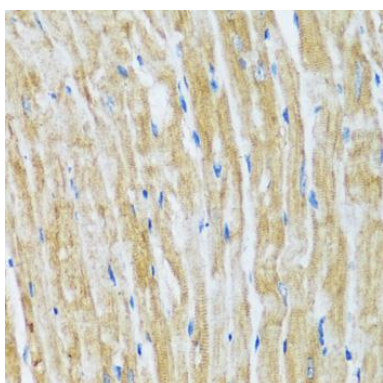
Western blot analysis of extracts of various cell lines, using BAG3 antibody (CAB14826) at 1:1000 dilution. Secondary antibody: HRP Goat Anti-Rabbit IgG (H+L) (CABS014) at 1:10000 dilution. Lysates/proteins: 25ug per lane. Blocking buffer: 3% nonfat dry milk in TBST. Detection: ECL Basic Kit (CABM00020). Exposure time: 30s.



Immunohistochemistry of paraffin-embedded rat heart using BAG3 antibody (CAB14826) at dilution of 1:100 (40x lens).



Immunohistochemistry of paraffin-embedded human lung using BAG3 antibody (CAB14826) at dilution of 1:100 (40x lens).



Immunohistochemistry of paraffin-embedded mouse heart using BAG3 antibody (CAB14826) at dilution of 1:100 (40x lens).