

RALGPS1 Rabbit Polyclonal Antibody



CAB14827

Product Information

Size:

20uL, 50uL, 100uL, 200uL

Observed MW:

62kDa

Calculated MW:

11kDa/24kDa/34kDa/43kDa/
58kDa/59kDa/62kDa

Applications:

WB

Reactivity:

Rat

Antibody Information

Recommended dilutions:

WB 1:500 - 1:2000

Source:

Rabbit

Isotype:

IgG

Purification:

Affinity purification

Protein Background

Immunogen information

Gene ID:

9649

Uniprot

Q5JS13

Synonyms:

RALGPS1; RALGEF2; RALGPS1A

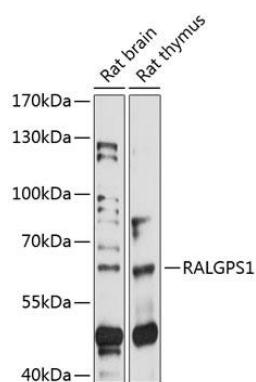
Immunogen:

Recombinant fusion protein containing a sequence corresponding to amino acids 1-300 of human RALGPS1 (NP_055451.1).

Storage:

Store at -20°C. Avoid freeze / thaw cycles. Buffer: PBS with 0.02% sodium azide, 50% glycerol, pH7.3.

Product Images



Western blot analysis of extracts of various cell lines, using RALGPS1 antibody (CAB14827) at 1:1000 dilution. Secondary antibody: HRP Goat Anti-Rabbit IgG (H+L) (CABS014) at 1:10000 dilution. Lysates/proteins: 25ug per lane. Blocking buffer: 3% nonfat dry milk in TBST. Detection: ECL Basic Kit (CABM00020). Exposure time: 90s.