

# TLK1 Rabbit Polyclonal Antibody



CAB14831

---

## Product Information

### Size:

20uL, 50uL, 100uL, 200uL

### Observed MW:

80kDa

### Calculated MW:

63kDa/77kDa/81kDa/86kDa/  
89kDa

### Applications:

WB IHC

### Reactivity:

Human, Mouse, Rat

## Protein Background

The protein encoded by this gene is a serine/threonine kinase that may be involved in the regulation of chromatin assembly. The encoded protein is only active when it is phosphorylated, and this phosphorylation is cell cycle-dependent, with the maximal activity of this protein coming during S phase. The catalytic activity of this protein is diminished by DNA damage and by blockage of DNA replication. Three transcript variants encoding different isoforms have been found for this gene.

## Immunogen information

### Gene ID:

9874

### Uniprot

Q9UKI8

### Synonyms:

TLK1; PKU-beta

## Antibody Information

### Recommended dilutions:

WB 1:500 - 1:2000 IHC 1:50  
- 1:100

### Source:

Rabbit

### Isotype:

IgG

### Purification:

Affinity purification

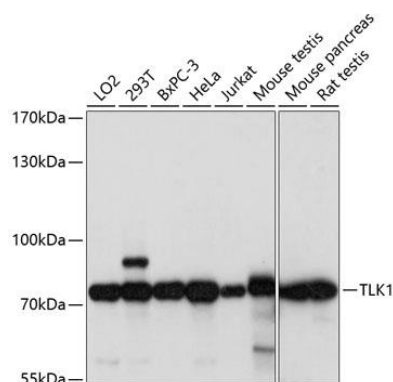
### Immunogen:

Recombinant fusion protein containing a sequence corresponding to amino acids 160-230 of human TLK1 (NP\_036422.3).

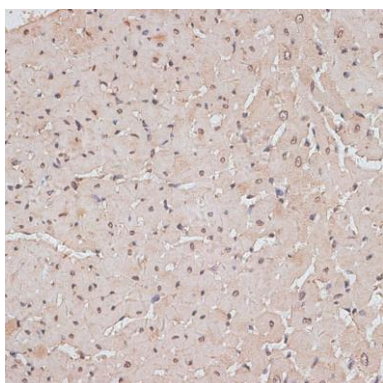
### Storage:

Store at -20°C. Avoid freeze / thaw cycles. Buffer: PBS with 0.02% sodium azide, 50% glycerol, pH7.3.

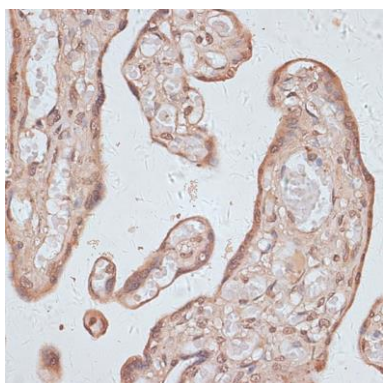
## Product Images



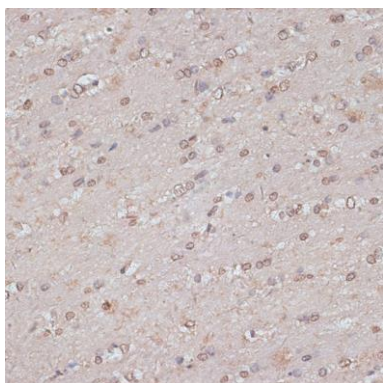
Western blot analysis of extracts of various cell lines, using TLK1 antibody (CAB14831) at 1:1000 dilution. Secondary antibody: HRP Goat Anti-Rabbit IgG (H+L) (CABS014) at 1:10000 dilution. Lysates/proteins: 25ug per lane. Blocking buffer: 3% nonfat dry milk in TBST. Detection: ECL Basic Kit (CABM00020). Exposure time: 1s.



Immunohistochemistry of paraffin-embedded rat heart using TLK1 antibody (CAB14831) at dilution of 1:100 (40x lens).



Immunohistochemistry of paraffin-embedded human placenta using TLK1 antibody (CAB14831) at dilution of 1:100 (40x lens).



Immunohistochemistry of paraffin-embedded mouse brain using TLK1 antibody (CAB14831) at dilution of 1:100 (40x lens).