

# SWAP70 Rabbit Polyclonal Antibody



CAB14857

---

## Product Information

### Size:

20uL, 50uL, 100uL, 200uL

### Observed MW:

69kDa

### Calculated MW:

68kDa

### Applications:

WB IHC IF

### Reactivity:

Human, Mouse, Rat

## Antibody Information

### Recommended dilutions:

WB 1:500 - 1:2000 IHC 1:50  
- 1:200 IF 1:50 - 1:200

### Source:

Rabbit

### Isotype:

IgG

### Purification:

Affinity purification

## Protein Background

### Immunogen information

#### Gene ID:

23075

#### Uniprot

Q9UH65

#### Synonyms:

SWAP70; HSPC321; SWAP-70

#### Immunogen:

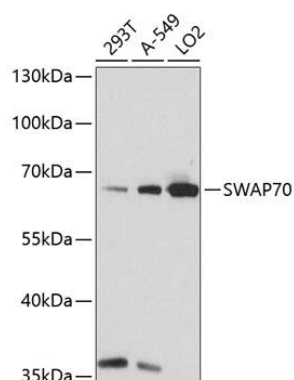
Recombinant fusion protein containing a sequence corresponding to amino acids 316-585 of human SWAP70 (NP\_055870.2).

#### Storage:

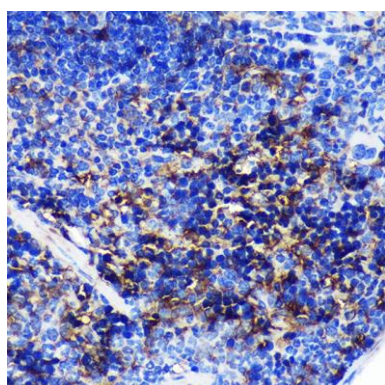
Store at -20°C. Avoid freeze / thaw cycles. Buffer: PBS with 0.02% sodium azide, 50% glycerol, pH7.3.

## Product Images

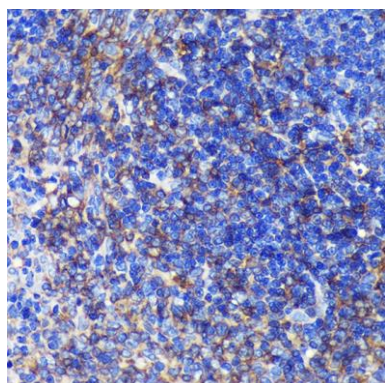
---



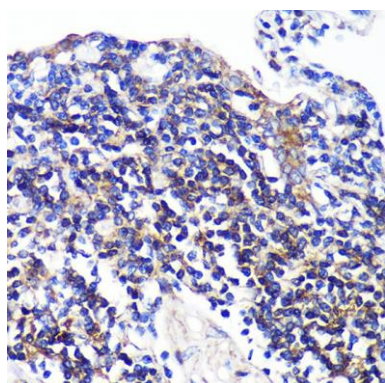
Western blot analysis of extracts of various cell lines, using SWAP70 antibody (CAB14857) at 1:1000 dilution. Secondary antibody: HRP Goat Anti-Rabbit IgG (H+L) (CABS014) at 1:10000 dilution. Lysates/proteins: 25ug per lane. Blocking buffer: 3% nonfat dry milk in TBST. Detection: ECL Basic Kit (CABM00020). Exposure time: 5s.



Immunohistochemistry of paraffin-embedded Mouse spleen using SWAP70 Rabbit pAb (CAB14857) at dilution of 1:100 (40x lens).



Immunohistochemistry of paraffin-embedded Rat spleen using SWAP70 Rabbit pAb (CAB14857) at dilution of 1:100 (40x lens).



Immunohistochemistry of paraffin-embedded Human lung using SWAP70 Rabbit pAb (CAB14857) at dilution of 1:100 (40x lens).