

Polyclonal AntibodyPC1 Rabbit Polyclonal Antibody

CAB14872



Product Information

Size:

20uL, 50uL, 100uL, 200uL

Observed MW:

71kDa

Calculated MW:

61kDa/70kDa

Applications:

WB IHC IF

Reactivity:

Human, Mouse, Rat

Protein Background

This gene encodes a poly(A) binding protein. The protein shuttles between the nucleus and cytoplasm and binds to the 3' poly(A) tail of eukaryotic messenger RNAs via RNA-recognition motifs. The binding of this protein to poly(A) promotes ribosome recruitment and translation initiation; it is also required for poly(A) shortening which is the first step in mRNA decay. The gene is part of a small gene family including three protein-coding genes and several pseudogenes.

Immunogen information

Gene ID:

26986

Uniprot

P11940

Synonyms:

PABPC1; PAB1; PABP; PABP1; PABPC2; PABPL1

Antibody Information

Recommended dilutions:

WB 1:500 - 1:2000 IHC 1:50
- 1:100 IF 1:50 - 1:100

Source:

Rabbit

Isotype:

IgG

Purification:

Affinity purification

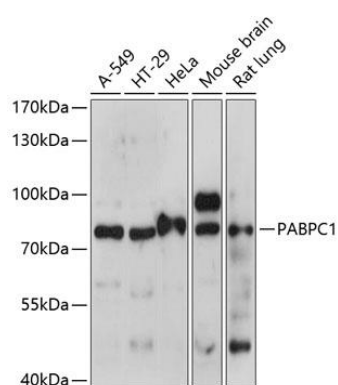
Immunogen:

A synthetic peptide corresponding to a sequence within amino acids 350-450 of human PABPC1 (NP_002559.2).

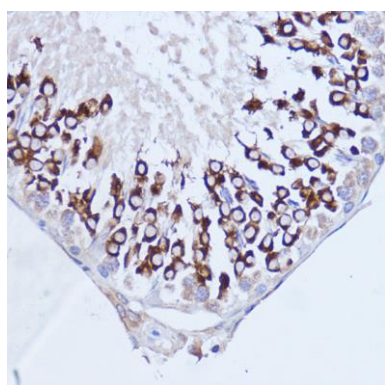
Storage:

Store at -20°C. Avoid freeze / thaw cycles. Buffer: PBS with 0.02% sodium azide, 50% glycerol, pH7.3.

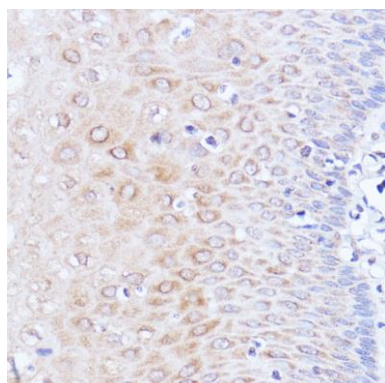
Product Images



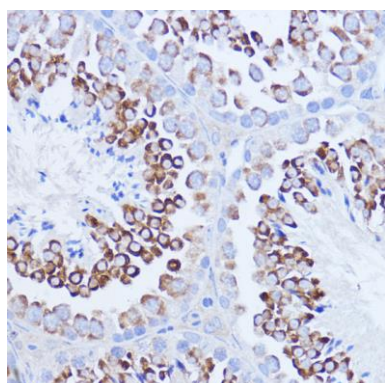
Western blot analysis of extracts of various cell lines, using PABPC1 antibody (CAB14872) at 1:1000 dilution. Secondary antibody: HRP Goat Anti-Rabbit IgG (H+L) (CABS014) at 1:10000 dilution. Lysates/proteins: 25ug per lane. Blocking buffer: 3% nonfat dry milk in TBST. Detection: ECL Basic Kit (CABM00020). Exposure time: 30s.



Immunohistochemistry of paraffin-embedded rat testis using PABPC1 antibody (CAB14872) at dilution of 1:100 (40x lens).



Immunohistochemistry of paraffin-embedded human esophageal using PABPC1 antibody (CAB14872) at dilution of 1:100 (40x lens).



Immunohistochemistry of paraffin-embedded mouse testis using PABPC1 antibody (CAB14872) at dilution of 1:100 (40x lens).