

CYTH4 Rabbit Polyclonal Antibody



CAB14875

Product Information

Size:

20uL, 50uL, 100uL, 200uL

Observed MW:

46kDa

Calculated MW:

45kDa

Applications:

WB

Reactivity:

Mouse, Rat

Antibody Information

Recommended dilutions:

WB 1:500 - 1:2000

Source:

Rabbit

Isotype:

IgG

Purification:

Affinity purification

Protein Background

This gene encodes a member of the PSCD family of proteins, which have an N-terminal coiled-coil motif, a central Sec7 domain, and a C-terminal pleckstrin homology (PH) domain. The coiled-coil motif is involved in homodimerization, the Sec7 domain contains guanine-nucleotide exchange protein (GEP) activity, and the PH domain interacts with phospholipids and is responsible for association of PSCDs with membranes. Members of this family function as GEPs for ADP-ribosylation factors (ARFs), which are guanine nucleotide-binding proteins involved in vesicular trafficking pathways. This protein exhibits GEP activity in vitro with ARF1 and ARF5, but is inactive with ARF6. Alternatively spliced transcript variants have been found for this gene.

Immunogen information

Gene ID:

27128

Uniprot

Q9UIA0

Synonyms:

CYTH4; CYT4; DJ63G5.1; PSCD4

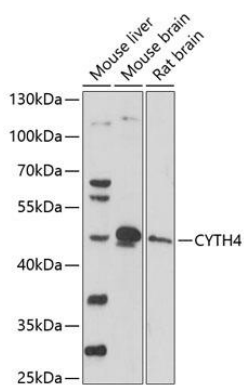
Immunogen:

Recombinant fusion protein containing a sequence corresponding to amino acids 1-70 of human CYTH4 (NP_037517.1).

Storage:

Store at -20°C. Avoid freeze / thaw cycles. Buffer: PBS with 0.02% sodium azide, 50% glycerol, pH7.3.

Product Images



Western blot analysis of extracts of various cell lines, using CYTH4 antibody (CAB14875) at 1:1000 dilution. Secondary antibody: HRP Goat Anti-Rabbit IgG (H+L) (CABS014) at 1:10000 dilution. Lysates/proteins: 25ug per lane. Blocking buffer: 3% nonfat dry milk in TBST. Detection: ECL Basic Kit (CABM00020). Exposure time: 90s.