

# RPS6KA6 Rabbit Polyclonal Antibody



CAB14876

## Product Information

### Size:

20uL, 50uL, 100uL, 200uL

### Observed MW:

84kDa

### Calculated MW:

83kDa/84kDa

### Applications:

WB

### Reactivity:

Mouse

## Protein Background

This gene encodes a member of ribosomal S6 kinase family, serine-threonine protein kinases which are regulated by growth factors. The encoded protein may be distinct from other members of this family, however, as studies suggest it is not growth factor dependent and may not participate in the same signaling pathways.

## Immunogen information

### Gene ID:

27330

### Uniprot

Q9UK32

### Synonyms:

RPS6KA6; PP90RSK4; RSK-4; RSK4; S6K-alpha-6; p90RSK6

## Antibody Information

### Recommended dilutions:

WB 1:500 - 1:2000

### Source:

Rabbit

### Isotype:

IgG

### Purification:

Affinity purification

### Immunogen:

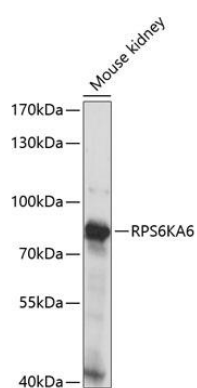
Recombinant fusion protein containing a sequence corresponding to amino acids 646-745 of human RPS6KA6 (NP\_055311.1).

### Storage:

Store at -20°C. Avoid freeze / thaw cycles. Buffer: PBS with 0.02% sodium azide, 50% glycerol, pH7.3.

## Product Images

---



Western blot analysis of extracts of mouse kidney, using RPS6KA6 antibody (CAB14876) at 1:1000 dilution. Secondary antibody: HRP Goat Anti-Rabbit IgG (H+L) (CABS014) at 1:10000 dilution. Lysates/proteins: 25ug per lane. Blocking buffer: 3% nonfat dry milk in TBST. Detection: ECL Enhanced Kit (CABM00021). Exposure time: 10s.