

# NME7 Rabbit Polyclonal Antibody



CAB14882

---

## Product Information

### Size:

20uL, 50uL, 100uL, 200uL

### Observed MW:

39kDa

### Calculated MW:

38kDa/42kDa

### Applications:

WB

### Reactivity:

Mouse

## Antibody Information

### Recommended dilutions:

WB 1:500 - 1:2000

### Source:

Rabbit

### Isotype:

IgG

### Purification:

Affinity purification

## Protein Background

This gene encodes a member of the non-metastatic expressed family of nucleoside diphosphate kinases. Members of this family are enzymes that catalyzes phosphate transfer from nucleoside triphosphates to nucleoside diphosphates. This protein contains two kinase domains, one of which is involved in autophosphorylation and the other may be inactive. This protein localizes to the centrosome and functions as a component of the gamma-tubulin ring complex which plays a role in microtubule organization. Mutations in this gene may be associated with venous thromboembolism. Alternate splicing results in multiple transcript variants.

## Immunogen information

### Gene ID:

29922

### Uniprot

Q9Y5B8

### Synonyms:

NME7; CFAP67; MN23H7; NDK 7; NDK7; nm23-H7

### Immunogen:

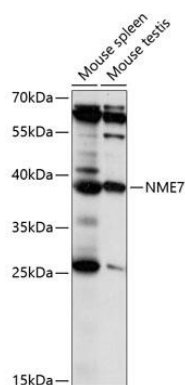
Recombinant fusion protein containing a sequence corresponding to amino acids 1-376 of human NME7 (NP\_037462.1).

### Storage:

Store at -20°C. Avoid freeze / thaw cycles. Buffer: PBS with 0.02% sodium azide, 50% glycerol, pH7.3.

## Product Images

---



Western blot analysis of extracts of various cell lines, using NME7 antibody (CAB14882) at 1:1000 dilution. Secondary antibody: HRP Goat Anti-Rabbit IgG (H+L) (CABS014) at 1:10000 dilution. Lysates/proteins: 25ug per lane. Blocking buffer: 3% nonfat dry milk in TBST. Detection: ECL Basic Kit (CABM00020). Exposure time: 10s.